



RECEIVED

JAN 06 2004

LEGAL SERVICES

December 19, 2003

Honorable Judah Gribetz, Esq.  
Special Master  
Holocaust Victim Assets Litigation  
P.O. Box 8300  
San Francisco, CA 94128-8300

Re: ***In Re: Holocaust Victim's Assets Litigation***, CASE NO. 96CV4849  
(ERK)(MDG) (Consolidated with CV 96-5161 and CV 97-461)

Dear Special Master Gribetz:

We respectfully submit on behalf of the Pink Triangle Coalition the enclosed *Joint Objection and Proposal of the Pink Triangle Coalition in Response to the Special Master's October 2, 2003 Recommendation*.

We respectfully request that the list of *Presently Identified Needy Living Survivors of Nazi Persecution of Homosexuals* submitted in Appendix 2 in the enclosed materials not be posted on the Internet site for this litigation, as otherwise called for in the Special Master's Recommendation. We make this request to preserve the privacy of these elderly Nazi victims, many of whom are in ill health.

Respectfully submitted,

Susan Sommer

cc: Honorable Edward R. Korman  
Professor Burt Neuborne  
Morris A. Ratner, Esq.  
Roger Witten, Esq.



December 19, 2003

Honorable Edward R. Korman  
United States District Judge  
Eastern District of New York  
225 Cadman Plaza East  
Brooklyn, NY 11201

Re: *In Re: Holocaust Victim's Assets Litigation*, CASE NO. 96CV4849  
(ERK)(MDG) (Consolidated with CV 96-5161 and CV 97-461)

Dear Judge Korman:

We respectfully enclose on behalf of the Pink Triangle Coalition a courtesy set of the *Joint Objection and Proposal of the Pink Triangle Coalition in Response to the Special Master's October 2, 2003 Recommendation*.

We have filed these materials in this Court, and have submitted them as well to the Special Master as directed in the call for proposals.

**We respectfully request that the list of *Presently Identified Needy Living Survivors of Nazi Persecution of Homosexuals* submitted in Appendix 2 in the enclosed materials not be posted on the Internet site for this litigation, as otherwise called for in the Special Master's Recommendation. We make this request to preserve the privacy of these elderly Nazi victims, many of whom are in ill health.**

Respectfully submitted,

A handwritten signature in black ink, appearing to read "Susan Sommer", written over a horizontal line.

Susan Sommer

cc: Special Master Judah Gribbetz, Esq.  
Professor Burt Neuborne  
Morris A. Ratner, Esq.  
Roger Witten, Esq.

UNITED STATES DISTRICT COURT  
EASTERN DISTRICT OF NEW YORK

-----x  
IN RE. HOLOCAUST VICTIMS ASSETS  
LITIGATION

CASE NO. 96CV4849(ERK)(MDG)  
(Consolidated with CV 96-5161 and  
CV 97-461)

-----x  
**Pink Triangle Coalition Proposal**  
**Astraea Lesbian Foundation for Justice**  
**Financial and Programmatic Reports**  
**Appendix 4**

**RESUMES – Key Staff**

**Katherine Acey, Executive Director**

Katherine Acey, one of our nation's most respected activists, is best known for her expertise and unyielding commitment to lesbian and women's philanthropy. For more than 25 years, Ms. Acey has served as an innovative force in the non-profit world and in the foundation arena in particular. Her creative and inclusive vision of grantmaking has been instrumental in setting a standard for a more progressive, diverse and community-based definition of philanthropy.

In 1987, after serving on Astraea's Board of Directors for four years, Ms. Acey was hired as its Executive Director—the organization's first paid staff person. Under Ms. Acey's stewardship, Astraea has enjoyed tremendous growth. Its grants program has been expanded from a local and regional focus to funding nationally and internationally. In 1990, the foundation established the nation's first Lesbian Writers Fund. And in 1996, Astraea created one of its most far-reaching and distinct grants programs: The International Fund for Sexual Minorities.

Ms. Acey's past work and affiliations read like a *Who's Who* of the women's social justice movement. Ms. Acey has been involved in the Women's Funding Network since its inception and served on the board as a member and as a Chairperson. She is also a founding member of Funders for Lesbian and Gay Issues. From 1982 to 1987, Ms. Acey was the Associate Executive Director of the North Star Fund in New York City. In addition, Ms. Acey has served as a Board of Director and advisor to countless organizations including Women in the Arts, the Center for Anti-Violence Education, New York Women Against Rape, MADRE, Women Make Movies and an Arab Lesbian group. She was also the Chair of the National Executive Committee of the Palestine Solidarity Committee.

Ms. Acey's career is held in high regard by many. For her leadership in building a multi-cultural women's funding network, she was honored by the prestigious Women's Funding Network. Additional honors include the Cross Cultural Black Women's Studies Institute, the International Women's Leadership Award, the NYC National Organization for Women *Susan B. Anthony Award* and, the Women & Philanthropy LEAD Award. Selected to participate in a number of international delegations dealing with human rights, she has visited South Africa, China, Nicaragua, El Salvador, Cuba, India and the Middle East.

**Karen Zelermyer, Deputy Director**

For the past thirty years, Karen Zelermyer has been a steady and vital force in the national movement for social justice. She has worked in the peace, anti-intervention and women's movement holding titles ranging from Executive Director and board member, to Development Director and consultant. She possesses more than twenty years of professional non-profit experience.

Since joining Astraea as Deputy Director in 1995, Ms. Zelermyer has expanded and solidified Astraea's fundraising, donor organizing and philanthropic education programs. In 1997, under Ms. Zelermyer's leadership, Astraea established *Smart Women/Smart Money*, its



flagship financial and philanthropic education program. Zelermyer is also part of the team that launched *The Astraea Challenge: A Campaign to Empower*, which has established a \$3,000,000 endowment for the organization.

In addition to Ms. Zelermyer's work with Astraea, she currently serves as Treasurer of Funders for Lesbian and Gay Issues. She is a past board member of Astraea, Women Make Movies, New York Women Against Rape, Media Network and the New York City Rainbow Coalition. Prior to joining Astraea, Ms. Zelermyer served as the Associate Executive Director for Development and Communications for Women In Need, a New York City women's agency whose annual budget exceeds 9 million.

### **Christine Lipat, Sr. Program Officer**

Christine T. Lipat directs all of Astraea's national and international grants programs. She is Chair of the Board of Directors of Audre Lorde Project, a center for the Lesbian, Gay, Bisexual, Transgender and Two-spirit People of Color communities in New York City. She has served on the Women's Funding Network 1999 Conference Committee and is a member of Grantmakers Without Borders (a working group of the National Network of Grantmakers) and Asian Americans and Pacific Islanders in Philanthropy. Prior to Astraea, she worked as acting executive director at Asian American Arts Alliance, coordinating the unprecedented Technical Assistance & Regrant Initiative for grassroots Asian American arts groups. She is a founding member of Kilawin Kolektibo, a NYC Filipina lesbian/bisexual/transgender collective and a former member of Gabriela Network, a US-Philippine women's solidarity network.

### **Jennifer Einhorn, Director of Communications**

For the past fifteen years, Jennifer Einhorn has been a communications strategist working primarily in the arenas of social issues and the arts. She has designed media and investment campaigns, served as an opinion piece writer, lecturer and spokesperson. She is the former Director of Communications for GLAAD, and MAMM magazine and a former journalist for the Boston Phoenix and Boston Herald. She has secured top-tier media placements for clients in venues such as: The Wall Street Journal, USA Today, The New Republic, Time, Entertainment Weekly, People; and on CNN, NBC Nightly News, NPR and the BBC.

**Pink Triangle**  
**Coalition Proposal**  
**Appendix 4**

**Astraea Lesbian Foundation for Justice**  
**International Fund for Sexual Minorities**

Astraea Foundation has been a feminist, grassroots-oriented organization since its founding in 1977 and incorporation as a public charity in 1978. Astraea was started by a multi-racial, multi-class group of women to support the many programs and projects that were having difficulty getting funding due to their progressive and feminist perspectives. It is one of the three oldest women's funds in the U.S. and the largest lesbian organization in the world.

Over the last twenty-seven years, Astraea has undergone a thoughtful and dynamic maturation process rooted in a commitment to building an organization that is culturally, racially and economically diverse. Initially established as a regional women's foundation inclusive of lesbians, Astraea broadened its scope in 1990 to become a national lesbian foundation inclusive of gay men and all women and girls. With the creation of the International Fund for Sexual Minorities in 1996 Astraea further expanded its work and mission to reflect the global political realities and needs of the LGBTI community.

**INTERNATIONAL FUND METHODOLOGY & OBJECTIVES**

The mission of the International Fund is to support sexual minorities who are lesbian, gay, bisexual, transgender or intersex working on their own behalf, in a way that fights lesbian invisibility and misogyny and that reflects the diversity of the geographic region in which they work. The Fund makes grants for both general and project-specific support and is particularly interested in providing support for organizational infrastructure building.

Among the Fund's priorities are groups that have limited sources of traditional funding located in Latin America, the Caribbean, Asia, the Pacific, Eastern Europe, the former Soviet Republics, the Middle East and Africa.

Astraea's grantmaking methodology actively integrates a political, social and economic analysis linking gender oppression and its direct effect on lesbian and gay oppression to issues of economic status, ethnicity, age, physical and mental ability, national identity and religious affiliation. Part of what makes Astraea unique is its historical commitment to funding lesbian organizations that have the capacity for addressing interrelated forms of oppression including sexual orientation. As a result of this commitment, the majority of Astraea's grantees are either

lesbians of color, multicultural/multiracial lesbian organizations or progressive, women's or co-gender organizations that have lesbians in leadership and include lesbian issues as a part of their work.

## **INTERNATIONAL FUND HISTORY & STRUCTURE**

The establishment of the International Fund for Sexual Minorities was the realization of a long-held vision of Astraea to expand our grantmaking and technical assistance programs internationally. The Fund was established in 1996 with a donor-directed grant of \$220,000 from Ise Bosch, a German lesbian, through the Heinrich Böll Foundation in Germany.

Astraea developed the Fund in consultation with the International Gay and Lesbian Human Rights Commission (IGLHRC). Additionally, Astraea initiated contact with fellow international funders such as The Global Fund for Women, the Global Greengrants Fund, Mama Cash and FREESA to examine different models for international grantmaking and key issues faced.

Astraea has created two advisory groups: an International Grants Panel and Advisory Board. The Grants Panel is made up of LGBTI people who are based in North America. All of the members were born and/or have lived for extended periods in one of the targeted funding regions. The panel is diverse in knowledge and expertise within the International Fund's scope. This panel reviews grant applications and makes final award decisions. The Advisory Board, currently made up of sixteen LGBTI individuals from around the world, receives a summary of proposals under review for comments and feedback. This information is then shared with the Grants Panel.

To supplement the knowledge and expertise of our panelists and advisory board members, Astraea has developed formal applicant informational exchange relationships with IGLHRC, Mama Cash, The Global Fund for Women and Urgent Action Fund.



APPLICATION BY EMAIL IS ENCOURAGED.

The next closing deadline is extended to June 23, 2003.

## INTERNATIONAL FUND FOR SEXUAL MINORITIES GRANT APPLICATION AND GUIDELINES

Astraea International Fund for Sexual Minorities was established with a donor-directed grant from Ise Bosch through the Heinrich Böll Foundation and with the initial efforts of the International Gay and Lesbian Human Rights Commission. The creation of this Fund acknowledges the growing global movement for the human rights of sexual minorities and the well-documented need to support groups that enhance the lives of lesbian, gay, bisexual, and transgendered (LGBT) peoples worldwide.

Astraea's emphasis is on funding groups that are committed to progressive social change. Astraea grantees are lesbian organizations and LGBT organizations, or progressive organizations that have LGBT's in leadership roles and include LGBT issues as an integral part of their work. We also fund gay men and transgendered groups that fulfill the above criteria. Through advocacy and education, groups are working to fight homophobia, and to promote human rights for LGBT's in their home countries, as well as providing social and cultural spaces for LGBT's to come out and to express their individuality. Astraea funds such issues as anti-violence, health, culture, economic justice, anti-homophobia, advocacy, leadership development and empowerment services.

Astraea, the first nationwide lesbian foundation in the United States, has been a feminist, grassroots-oriented organization since its founding in 1977. Started by a multi-racial, multi-cultural group of feminist activists, Astraea has always worked with and on behalf of projects that embrace and promote a social justice agenda throughout the world.

### GENERAL GUIDELINES

---

Astraea International Fund for Sexual Minorities supports groups, projects, or organizations working towards progressive social change which are led by and/or for lesbians, gays, bisexuals and transgender (LGBT)\* communities and directly address oppression based on sexual orientation and gender expression.

- ✓ Organizations should also demonstrate an understanding of the connections among oppressions and have a commitment to address other forms of oppression such as oppression based on gender, class, race, ethnicity, age, physical and mental ability, national identity, and religious affiliation.
- ✓ Projects funded by Astraea embrace inclusivity and reflect the diversity of the geographic region in which they do their work.

*\*We recognize the limitations of Western definitions of transgender and same gender-loving people and support indigenous expressions of these identities such as Iban (Korea), Two-Spirited (Native American), Shamakhami (Bengali), Hijira (Hindi), etc.*

### **GROUPS THAT ARE ELIGIBLE TO APPLY**

*Your group must fulfill all of the following requirements:*

- ✓ Only groups, and not individuals, are eligible to apply.
- ✓ Groups must be based in Latin America, the Caribbean, Asia, the Pacific Islands, Eastern Europe, the former Soviet Republics, the Middle East, or Africa.
- ✓ Groups must be doing work on issues affecting LGBT\* people and/or people who are penalized, persecuted or harassed for their sexual behavior with consenting adults or for their gender expression. Non-LGBT-led groups must demonstrate how they address LGBT human rights issues and how they involve LGBT's in organizational decision-making.
- ✓ A group must have been active for at least one year at the time you send in your proposal. A group which has been active for less than one year may apply if you demonstrate your group's ability to sustain activities over the long-term and illustrate how a grant would help you to build your organization's capabilities.



**FUNDING PRIORITIES** - applicants must meet the preceding criteria and eligibility requirements.

Funding priorities include the following:

- ✓ Groups directed by and targeted to lesbians.
- ✓ Groups composed of, or have a history of working with, lesbian/gay/bisexual/transgendered communities, who may also work with vulnerable sexual minorities including transvestites, sex workers, youth, seniors, people with disabilities and ethnic minorities.

Within the above funding priorities, serious consideration is given to the following projects:

- Proposals which strengthen a group's ability to organize. Organizing may be defined as activities that actively engage people affected by societal problems in the process of identifying and pursuing solutions. Strategies could include building infrastructure and communications, including appropriate technology, between group members or with non-group members at a local, national, regional or global level.
- Groups with limited sources of traditional funding.
- Groups that would benefit from general support funds for such expenses as equipment, rent, supplies, training, and staff needs that help build the capacity of the group to carry out its work.

### **TYPES OF SUPPORT**

Astraea Foundation generally does not fund university-sponsored projects. Astraea Foundation generally does not fund organizations with budgets above US \$500,000.

- **General Support:** Organizations may apply for general support, including expenses such as salary and rent, equipment, training, and staff needs that help build the management and programmatic capacity of the group to carry out its work.
- **Project Support:** Organizations or groups that meet our guidelines and fit in a priority funding category may apply for a specific project or for program support.

### **NEXT DEADLINES**

May 30, 2003

### **FUNDING LEVELS**

The maximum grant is US \$10,000. The average grant ranges from US \$2,000 to US \$6,000.

### **REVIEW PROCESS**

1. Applications are reviewed and discussed by the International Fund Grants Panel, with participation from the International Advisory Board and Astraea staff.
2. All applicants are notified by mail of funding decisions within **five months** after the closing date.

### **CONDITIONS OF A GRANT**

- ✓ Groups awarded a grant will receive a written term of agreement. A follow-up report is due within a year of the grant.
- ✓ A group may receive only one grant in a 12 month period. However, there is no limit to the number of consecutive year grants an organization may be awarded.
- ✓ Grants will only be made to non-governmental organizations and/or projects which meet *in form and spirit* of the criteria which are used in determining non-taxable 501 (c)(3) status in the United States of America, i.e. organizations operated for charitable or educational purposes.
- ✓ Grants can only be made to the bank account of the organization. Astraea does not make grant payments to the account of an individual.

## APPLICATION INSTRUCTIONS

---

### COVER SHEET

The enclosed cover sheet must be completed in full. Please use only the space provided. Do not answer, "see attached proposal" to any of the questions. Applications without completed cover sheets will not be considered for funding.

### PROPOSAL NARRATIVE (Your answers for A,B & C should not exceed 5 pages)

#### A. **ORGANIZATIONAL DESCRIPTION** (an organization with a project request must complete this section)

- NEEDS STATEMENT:** What problems, needs, or issues does your organization address?
- HISTORY:** When and why was the organization started? Highlight major accomplishments. Outline all current programs and activities.
- CONSTITUENCY AND REGIONAL CONTEXT:** Who is your constituency? How does your constituent demographics relate to the diversity of your geographic region?
- VALUES:** How does your work promote diversity and address inequality, oppression and discrimination within your organization as well as the larger society?
  - How is your organization anti-sexist and anti-heterosexist in perspective, within the organization and in your programs? How does your group address issues of race, age, class and disability?

#### B. **REQUEST** (an organization applying for project funding must answer each question both in brief for the organization and in detail for the project)

- REQUEST:** If this is a project request, briefly describe the project, why you decided to pursue this project, and whether it is a new or ongoing part of your organization. If this is a general operating request, describe the impact a grant would have on your organization.
- WORKPLAN:** What are the goals, objectives and activities for the year? What strategies are you using to achieve your goals? Who is involved in executing these plans?
  - For organizations that are applying for renewed support, describe how your organization or project has changed over the past 2 years and how these changes have impacted your goals for the coming year. How has grant money from Astraea affected your organization's capacity? How have you been able to leverage past grants?
- COMMUNITY INVOLVEMENT & OUTREACH:** How are your constituents involved in the design, implementation and evaluation of your work? For instance, if you serve LGBT youth, how are the youth involved in the leadership of the organization/project?
  - How do you prioritize, communicate with, and outreach to diverse constituencies?
- COALITIONS/COLLABORATIONS:** List local, regional and/or national organizations, groups, programs with whom you interact - formally or informally. Who do you work with most closely? How does this cooperation increase the effectiveness of your services?
- SYSTEMATIC/SOCIAL CHANGE:** How does your work address and change the underlying or root causes of the problem?

#### C. **EVALUATION**

- MEASURING SUCCESS:** Describe the ways in which you measure the success of your activities. In relation to the goals/objectives laid out above, what are your criteria for success? Who is involved in the evaluation? How are evaluation results used?
- IMPACT:** What is the intended short term and long term impact of this year's activities - both within the organization and within the community?

**D. ORGANIZATIONAL STRUCTURE AND ADMINISTRATION**

- STRUCTURE:** Briefly describe how your organization works - what are the responsibilities of the board or steering committee, staff, volunteers, or, if a membership organization, the members? Briefly outline how your capacity (infrastructure) may have changed in the recent past.
- FISCAL SPONSORSHIP:** If you are an organization or project with a fiscal sponsor, please describe the nature of your relationship.
- BOARD/STAFF/COMMITTEE LISTS:** Provide a list of your staff and board of directors or steering committee with related community and employment affiliations where possible.

✓ **FUNDRAISING AND FINANCIAL INFORMATION**

- BUDGETS:** Detailed organizational budget (last fiscal year & current fiscal year's income and expenses - see sample budget sheet) and, if applicable, project income and expenses. Please explain any items which may be unclear or unusual. **You must include financial history from the previous year to be considered for funding.**
- FUNDRAISING STRATEGY:** Describe your fundraising strategy (list potential and committed funding sources) and who is involved in implementing the organization's fundraising plan. What is your long term plans for sustaining the organization?
- REQUEST AMOUNT:** Specify the amount of funding being requested in relation to your budget and how the grant would be used. List individually other funding sources for this request. Include actual grants, income, revenue and in-kind contributions to date.

✓ **SUPPORT MATERIAL**

- LETTERS OF SUPPORT (up to 3):** From those outside the organization who you work with in coalition or collaboration or those who are familiar with your work. At least two should be from within your country.
- 3 REFERENCES:** Those people (different from the letters) who are familiar with your organization's work, but are not members. Please include mailing address, phone number, and e-mail address.

✓ **Attachments**

- Recent annual report, newsletter, articles, newspaper clippings, event photos, evaluations or reviews providing evidence of your organization's accomplishments.
- A copy of your charitable/non-governmental organization registration letter or one copy of a letter from your project sponsor, on its letterhead, indicating that it is a non-governmental organization who has agreed to serve as your fiscal/financial sponsor.

**ASTRAEA FOUNDATION INTERNATIONAL FUND SAMPLE BUDGET SHEET**  
 (optional, you may use other formats)

Organization \_\_\_\_\_

Fiscal year begins: \_\_\_\_\_ ends: \_\_\_\_\_

ORGANIZATION INCOME	Last Fiscal Year ACTUAL	This FY PROJECTED	Project (IF APPLICABLE)
Membership Dues _____			
Individual Contributions _____			
Special Events _____			
Corporate Contributions _____			
Foundation Grants _____			
Government Fees/Grants _____			
Fees for Services _____			
Other (itemize):			
1. _____			
2. _____			
<b>TOTAL INCOME</b> _____			
<b>ORGANIZATION EXPENSES</b>			
Salaries/Wages _____			
Payroll Taxes _____			
Consultants/Professional Fees _____			
Rent _____			
Supplies _____			
Telephone/Internet _____			
Postage/Mailings _____			
Printing/Copying _____			
Equipment _____			
Travel _____			
Meetings/Conferences _____			
Subscriptions/Publications _____			
Other (itemize):			
1. _____			
2. _____			
3. _____			
<b>TOTAL EXPENSES</b> _____			
Excess Revenue (Expenses) _____			
Opening Balance _____			
Closing Balance _____			

# Astraea Lesbian Action Foundation International Fund For Sexual Minorities Application Cover Sheet

Organization Name \_\_\_\_\_ Year Founded \_\_\_\_\_

Address \_\_\_\_\_

City \_\_\_\_\_ State \_\_\_\_\_ Country \_\_\_\_\_ Postal Code \_\_\_\_\_

Telephone \_\_\_\_\_ Fax \_\_\_\_\_ E-Mail/ Web Site Address \_\_\_\_\_

Contact Person/Title \_\_\_\_\_

*Fiscal Sponsor (Non-governmental organization to receive grants funds if other than organization listed above)*

Address \_\_\_\_\_ City \_\_\_\_\_ State \_\_\_\_\_ ZIP \_\_\_\_\_

Contact Person/Title \_\_\_\_\_ Telephone \_\_\_\_\_

Type of Request:  General Support  Project Support  
 Astraera Grant Request \$ \_\_\_\_\_  
 Total Project Budget (if applicable) \$ \_\_\_\_\_  
 Organizational Budget (current yr.) \$ \_\_\_\_\_

Previously applied for ASTRAEA grant?:  Yes  No  
 Received ASTRAEA grant?:  Yes  No

ORGANIZATION'S PRIMARY ISSUE AREA (CIRCLE ONE)	ORGANIZATION'S PRIMARY STRATEGY (CIRCLE ONE)
Aging anti-violence cancer culture disabilities economic justice faith-based family general health HIV/AIDS homophobia immigration legal/civil rights mental health multi-issue peace & justice sexuality/gender women/girls youth other	Advocacy culture direct services-empowerment education grassroots organizing leadership development media multi-strategy publications research technical assistance other

Geographic Area Served \_\_\_\_\_ # of staff: \_\_\_\_\_ Full-time \_\_\_\_\_ Part-time

Summarize the mission/goal of your organization or project.

Briefly describe your grant request:

Summarize specific work accomplished in the past year.

Describe the composition and size of your leadership, board, staff, volunteers, membership and constituency.  
 (Give specific numbers & percentages for gender, sexual orientation, age, disability, ethnicity, religious affiliation, or other relevant areas of diversity)



## **SUBMISSION**

---

Do not submit proposals in plastic or spiral binders, covers or notebooks. The submission of excessive amounts of paper is discouraged.

Please make sure you have followed all instructions.  
Incomplete proposals may not be considered for funding.

Submit all materials to: International Fund • Astraea Lesbian Action Foundation • 116 E. 16th St. • New York, NY 10003, USA.

If you have any questions about completing this application or questions once you receive a decision notification, please contact Anjana Suvarnananda, Program Officer at (212) 529-8021 ext. 13, (212) 982-3321 fax, or e-mail to [anjana@astraea.org](mailto:anjana@astraea.org).

**International Fund Grants Panel (as of 03/03):**  
Daniel Lee - IGLHRC, Nguru Karugu, Javid Syed, Marta Drury, Lisbeth Melendez.

**International Fund Advisory Board:**  
Bev Clark, Zimbabwe, Africa; Palesa Beverly Ditsie, Johannesburg, South Africa; Fatima Jaffer, Vancouver, Canada; Lepa Mladjenovic, Belgrade, Yugoslavia; Mirka Negroni, Tepoztlan, Mexico; Gloria Careaga Perez, D.F., Mexico; Alejandra Sarda, D.F., Mexico; Sridhar Venkatapuram, U.S.A.; Ma. Georgianna Villar, Quezon City, Philippines

**Astraea Board of Directors:**  
Carol Alpert, Kimberly Aceves Denyer, Marion Banzhaf, C.C. Carter, Cheryl Clarke, Brenda Funches, Mariam Habib, Adele James, Jennifer Knight, Nada Michael, Odalys Nanin, Sandra J. Robinson, Cindy Sterling, Eleanor Thomas, Gwen Walden, Denise Liggett, Léonie Walker, Su Ming Yeh

**Astraea Grants Program Staff:**  
Katherine Acey, Executive Director; C.J. Griffin, Program Associate; Christine Lipat, Senior Program Officer; Anjana Suvarnananda, Program Officer

**Astraea Lesbian Action Foundation, 116 E. 16th St., 7th Fl., New York, NY 10003, USA**  
212.529.8021 (phone), 212.982.3321 (fax), e-mail [anjana@astraea.org](mailto:anjana@astraea.org), web address: <http://www.astraea.org>

**Pink Triangle**  
**Coalition Proposal**  
**Appendix 4**

**International Fund for Sexual Minorities  
Social Change Opportunity Fund 2002-03**

**Guidelines and Request for Proposal by Invitation Only** *(please do not distribute)*

The **Social Change Opportunity Fund** provides larger multi-year grants to groups in developing countries that are conducting significant local and national social change projects to improve the lives of lesbian, gay, bisexual and transgendered (LGBT) communities.\*

**Social Change Opportunity Fund Project Guidelines**

We seek to support social change opportunity projects that are aimed at creating institutional change and/or changes that have broad and long-term societal impacts. These projects include initiatives to alter the beliefs, policy, programs and behaviors of institutions of influence, such as government agencies, legislatures and government leaders, major corporations, mainstream media, educational institutions, medical organizations, religious institutions, cultural and other social institutions not listed here (please specify). These timely projects can build upon or expand the scope of current campaigns or they can be new projects. Funded projects should begin after June 2003.

- Proposals should identify the particular institution(s) targeted by the organization's work.
- Proposals should explain the sought-after change (ie. elimination of government persecution, adoption of lgbt-inclusive policies, etc.).

We encourage methods that embrace community diversity and promote inclusivity of those most marginalized to participate in the leadership of the project. For instance, with anti-persecution activities, your organization may see non-urban lesbian community-building, leadership development of poor transgender and intersex youth, and/or coalition-building between economic rights and gender rights organizations as key tactics in your multi-year plan for having a more broad-based, longer lasting impact.

**General Criteria for Groups Invited to Apply**

Astraea International Fund for Sexual Minorities supports groups, projects, or organizations working towards progressive social change which are led by lesbians, gays, bisexuals and transgender (LGBT) communities and that directly address oppression based on sexual orientation and gender expression. Groups invited to apply to the **Social Change Opportunity Fund** of the Astraea International Fund for Sexual Minorities are grantees that share the following characteristics:

- Organizations have an understanding of the connections among oppressions and have a commitment to address other forms of oppression such as oppression based on gender, class, race, ethnicity, age, physical and mental ability, national identity, and religious affiliation.
- Projects funded by Astraea embrace inclusivity and reflect the diversity of the geographic region in which they do their work.
- Solid organizational management (functioning participatory decision-making structure, reporting and financial systems in place)
- Relevant, accountable community-based program development process
- History of organizing work
- Demonstrated capacity to develop budgets and manage grants, but continue to **experience** limited access to resources
- Organizational integrity, as evidenced by positive community references
- And Implementation of strategies that are compatible with the primary goals of **the Fund**

**Astraea International Fund for Sexual Minorities  
Social Change Opportunity Fund 2002-03**

**LETTER OF INTENT APPLICATION FORM INSTRUCTIONS**

The initial step in the Social Change Opportunity Fund application process is the submission of a Letter of Intent to Astraea Foundation. Attachments like brochures or news articles are not required. Applications can be submitted in any language.

Please submit by **February 17, 2003** to Anjana Suvarnananda, Program Officer  
Astraea Lesbian Action Foundation, [anjana@astraea.org](mailto:anjana@astraea.org), 1-212-982-3321 fax  
116 E 16<sup>th</sup> St., 7<sup>th</sup> Floor, New York, NY 10003.

**COVER SHEET – please answer all questions or your application may be disqualified.**

**ORGANIZATION**

**1. Contact information**

Name of the Organization  
Address  
Contact name  
e-mail (how often do you check?)  
phone and fax

**2. Do you have a bank account in the name of the organization? If not, why? If not, do you have a relationship with another NGO that would be willing to receive the funds for your project?**

**3. Please attach last year's organizational budget: INCOME and EXPENSES for your past 12-month fiscal cycle (for example, 2001 July to 2002 June):**

**What is your current year organizational expense budget summary?:**

\_\_\_\_\_ (year/month) to \_\_\_\_\_ (year/month) / Total Amount in USD: \$ \_\_\_\_\_

**4. Total paid staff for your most recent 12 month cycle: \_\_\_\_\_ full-time \_\_\_\_\_ part-time  
Total voluntary unpaid staff: \_\_\_\_\_ full-time \_\_\_\_\_ part-time**

**5. List the 3 largest donations received in the last 3 years:**  
Donor name \_\_\_\_\_, Date \_\_\_\_\_, Amount in USD\$ \_\_\_\_\_  
Donor name \_\_\_\_\_, Date \_\_\_\_\_, Amount in USD\$ \_\_\_\_\_  
Donor name \_\_\_\_\_, Date \_\_\_\_\_, Amount in USD\$ \_\_\_\_\_

**6. Organizational mission: brief summary of organizational goals and strategies.**

**7. Key organizational achievements in the last year.**

## PROJECT DESCRIPTION

8. Name of the Project \_\_\_\_\_

9. What is the project timeframe?

10. Request amount (Project can be for up to 2 years):

\$ \_\_\_\_\_ Year 1 out of a total anticipated organizational expense budget of USD\$ \_\_\_\_\_

\$ \_\_\_\_\_ Year 2 out of a total anticipated organizational expense budget of USD\$ \_\_\_\_\_

\$ \_\_\_\_\_ Total Request (not to exceed \$40,000 USD)

11. Submit 2 reference letters from organizations who support your work and can address the importance of this project.

## PROJECT DESCRIPTION –UP TO 1000 WORDS

1. Project grant request description (please include answers to the following questions in your description):

- Identify the particular institutions targeted by this project.
- Outline the change you expect to make. Who will benefit from this change?
- What are the strategies and the activities that you plan to undertake?
- Is this a new project or an expansion of an existing project?
- Are there particular social or political factors that make this project important at this particular time in your locality, country or region?
- Who is/was involved in shaping this project?
- How would this larger, multi-year grant impact and/or benefit the organization itself?
- What financial and administrative systems do you have in place to monitor your project expenditures? Or what systems will you need to develop?
- Please describe some of the larger expense items in your project budget (ie, addition of staff, increased publicity costs, etc.)

**Astraea International Fund for Sexual Minorities  
Social Change Opportunity Fund 2002-03**

**REQUEST FOR PROPOSAL INSTRUCTIONS**

This second step in the Social Change Opportunity Fund application process is the submission of a Proposal to Astraea Foundation. Attachments like brochures or news articles are welcomed. Applications can be submitted in any language. Please limit your proposal to 5 pages maximum, not including cover sheet and budgets.

Please submit by **May 7, 2003** to Anjana Suvarnananda, Program Officer  
Astraea Lesbian Action Foundation, [anjana@astraea.org](mailto:anjana@astraea.org), 1-212-982-3321 fax  
116 E 16<sup>th</sup> St., 7<sup>th</sup> Floor, New York, NY 10003.

**□ COVER SHEET**

**The enclosed application cover sheet must be completed in full.** Please use only the space provided. Do not answer, "see attached proposal" to any of the questions. Applications without completed cover sheets will not be considered for funding.

**PROJECT DESCRIPTION**

- **Name of the Project** \_\_\_\_\_
- **What is the project timeframe?**
- **Request amount (Project can be for up to 2 years):**  
\$ \_\_\_\_\_ **Year 1 out of a total anticipated organizational expense budget of USD\$** \_\_\_\_\_  
\$ \_\_\_\_\_ **Year 2 out of a total anticipated organizational expense budget of USD\$** \_\_\_\_\_  
\$ \_\_\_\_\_ **Total Request (not to exceed \$40,000 USD)**

**GRANT REQUEST**

**(please limit your proposal to 5 pages maximum, not including cover sheet and budgets)**

- **PROJECT GRANT REQUEST DESCRIPTION:** Describe the project, why you decided to pursue this project, and whether it is a new or ongoing part of your organization. How is your project timely?
  - identify the particular institution(s) targeted by the organization's work.
  - outline the sought-after change (ie. cessation of government persecution, adoption of lgbt-inclusive policies, etc.)
- **WORKPLAN:** What are the project goals, objectives and activities for the year (or for each year, if a multi-year request)? What strategies are you using to achieve your goals and why? Who is responsible for spearheading the project?
- **COMMUNITY INVOLVEMENT & OUTREACH:** How are your constituents involved in the design, implementation and evaluation of your work? For instance, if you serve LGBT youth, how are the youth involved in the leadership of the organization/project?
  - Will you be reaching new constituencies with this project?
- **COALITIONS/COLLABORATIONS:** List local, regional and/or national organizations, groups, programs with whom you interact or will interact – formally or informally. Who do you work with most closely? How does this cooperation increase the effectiveness of your services?



- **SYSTEMATIC/SOCIAL CHANGE:** How will this project address and change the underlying or root causes of the problem?

### EVALUATION

- **MEASURING SUCCESS:** Describe the ways in which you will measure the success of your activities. In relation to the goals/objectives laid out above, what are your criteria for success? Who is involved in the evaluation? How are evaluation results used?
- **IMPACT:** What is the intended short term and long term impact of this year's (or each year's) activities – both within the organization and within the community?

### ORGANIZATIONAL STRUCTURE AND ADMINISTRATION

- **BOARD/STAFF/COMMITTEE LISTS:** Provide a list of your staff and board of directors or steering committee with related community and employment affiliations where possible.

### FUNDRAISING AND FINANCIAL INFORMATION

- **BUDGETS:**
  1. Submit a detailed organizational income and expense report for 2002
  2. An organizational budget for 2003
  3. For the years in which you would receive the project grant, please provide a projected organizational and project budget for each year that the project will last

Please explain any items which may be unclear or unusual. **You must include financial history from the previous year to be considered for funding.** (see enclosed sample budget sheet for suggested line items and format).

- **FUNDRAISING STRATEGY:** Describe your fundraising strategy for the project (list potential and committed funding sources) and who is involved in implementing the organization's fundraising plan. What is your long term plans for sustaining the organization?
- **REQUEST AMOUNT:** Specify the amount of funding being requested in relation to your budget and how the grant would be used. List individually other funding sources for this request. Include actual grants, income, revenue and in-kind contributions to date.
- **FINANCIAL MANAGEMENT:** Describe how you track your organization's income and expenditures – for instance, what checks and balances do you have in place to ensure against fraud? How do you create your budget for the year?

### SUPPORT MATERIAL

- **LETTERS OF SUPPORT** (up to 3): From those outside the organization who you work with in coalition or collaboration or those who are familiar with your work. At least two should be from within your country.
- **3 REFERENCES:** Those people (different from the letters) who are familiar with your organization's work, but are not members. Please include mailing address, phone number, and e-mail address.

### Attachments

- Recent annual report, newsletter, articles, newspaper clippings, event photos, evaluations or reviews providing evidence of your organization's accomplishments.

- A copy of your charitable/non-governmental organization registration letter **or** one copy of a letter from your project sponsor, on its letterhead, indicating that it is a non-governmental organization who has agreed to serve as your fiscal/financial sponsor.

### Deadline

Applications will be accepted in the Astraea office until 6:00 pm (18:00) Eastern Standard Time **on May 7, 2003**. Applications that are late or incomplete will not be accepted.

### Funding Levels

Please note that the maximum grant size now ranges between \$30,000 to \$35,000, to be distributed in 2-year grants of up to \$20,000 each year. Please ensure that your request is not higher than \$35,000. Applications for multi-year projects should include organizational budgets for each relevant year.

### Notification

Applicants will be notified of funding decisions by mid-June 2003.

### Conditions of a Grant

1. Groups awarded a grant will receive a written term of agreement. A progress report is due within a year of the grant. *To avoid any delay in the processing of your application, please ensure that you have submitted any overdue reports from past Astraea grants.*
2. Grants will only be made to non-governmental organizations and/or projects which meet in form and spirit of the criteria which are used in determining non-taxable 501(c)3 status in the United States, ie. organizations operated for charitable or educational purposes.
3. Grants can only be made to the bank account of the organization. Astraea does not make grant payments to the account of an individual.
4. This is a one-time only grant above and beyond our regular grantmaking process.

### Submission Instructions

Applications can be sent by e-mail, mail or fax. Attachment of support materials encouraged, however the submission of excessive amounts of paper is discouraged. Do not submit proposals in plastic or spiral binders, covers or notebooks.

If possible, please submit your application in English. However, if you feel this will impact on the quality of your proposal, we will welcome your proposal in any language and will translate this proposal into English.

Submit all materials to: **Social Change Opportunity Fund • International Fund • Astraea Lesbian Action Foundation • 116 E. 16th St. • New York, NY 10003, USA, fax 1-212-982-3321 or e-mail [anjana@astraea.org](mailto:anjana@astraea.org)**

### Questions?

If you have any questions about the Astraea International Fund for Sexual Minorities and the Social Change Opportunity Fund, please e-mail Anjana Suvamananda, Program Officer at [grants@astraea.org](mailto:grants@astraea.org), phone 1-212-529-8021 ext. 13 or fax to 1-212-982-3321.

**What's Inside**

- 8 **Building Leaders**  
**Across the South**  
Profile of Astraea grantee SONG
- 4 **Planned Giving**  
Taking care of your family...  
and our community
- 11 **Astraea's Road Map**  
Events across the U.S.
- 2-3 **New Faces**  
Astraea's Board and Staff

**Events at a Glance**

In the months ahead, Astraea will be holding events in a location near you! Specific dates will be announced soon. For the most updated information, check Astraea's website at [www.astraea.org](http://www.astraea.org).

Albuquerque, NM April 2002	New York, NY November 2001
Boston, MA December 2001	Northampton, MA July 2002
Chicago, IL April 2002	San Francisco, CA February & March 2002
Long Island, NY June 2002	Washington, D.C. May 2002
Los Angeles, CA June 2002	

If you would like to help with any of these events or host a small house party for Astraea, contact Astraea Events Manager Kim Ford at [kford@astraea.org](mailto:kford@astraea.org) or 212-529-8021 xt.20.

# GLOBAL VISION GLOBAL ACTION

## Astraea and IGLHRC Partner to Connect LGBT Activists at UN World Conference Against Racism

*Editor's Note: Astraea's newsletter was in production as the UNWCAR ended, and was further delayed in the wake of the World Trade Center attacks. A full "Report from Durban" about the outcome of Astraea's role in this historic gathering will appear in the next edition of the Bulletin.*

Central to Astraea's priorities is supporting LGBT activists across the world who are at the vanguard of understanding how oppressions based on race, class, gender, sexual orientation, ability and age are interconnected. As a leading ally to these organizations, Astraea was presented with a unique and historic opportunity with the first-ever UN World Conference Against Racism, Racial Discrimination, Xenophobia and Related Intolerance (WCAR) held in Durban, South Africa August 31–September 7. continued on page 6

Photo: Katherine Acy



International LGBT activists at a picket for LGBT equality and human rights organized by the Durban Lesbian & Gay Community & Health Centre. (Front row, seated from left) Phumi Mtetwa, Co-Secretarie General of the International Lesbian and Gay Association; Nelly Jitsuya of GALF: Group de Lesbianas Feministas (Peru); Gift Ndlovu of GALZ; Gays and Lesbians of Zimbabwe; (directly behind Jitsuya) Joe Wilson, of the Public Welfare Foundation; and (directly behind Ndlovu) Vasu Reddy of the Durban LGCHC.



# Being Visible & Growing Strong

## A Letter From Astraea's Board Chair

*A resoundingly successful year. I am so pleased to report that fiscal year 2000/2001 has been that and more for Astraea. In Los Angeles, San Francisco, Chicago, North Hampton (MA), Washington, D.C., Long Island and New York City, we have dramatically increased our visibility. Our Board has expanded, with new members joining us from Cambridge (MA), Los Angeles and the Washington, D.C. metro area. And in each of our key cities, working hand-in-hand with Astraea's incomparably competent staff and local supporters, our Board has been deeply involved in co-chairing major events. 100 Years of Lesbian Writing in San Francisco. Uses of the Erotic, this year's Lesbian Writers Fund Gala in New York City. Our 23rd Anniversary Concert with Ani DiFranco, Holly Near and Margaret Cho, also in New York. And well-attended house-parties and benefits in the L.A., Chicago, D.C., Northampton and the Hamptons.*

*But the best news is that during the 2000-2001 fiscal year, Astraea gave over \$1 million in total grants to lesbian, women's, youth and LGBT organizations both in the United States and internationally. We did this as a member-driven organization, fueled by the generosity*

*and commitment of thousands of individuals across the U.S. and several supporters in Europe. On behalf of Astraea's Board of Directors and staff, I want to thank each of you for your unflogging support of our work. No gift is too small or too large. The sum total of our dedication is making a tremendous difference.*

*To keep building Astraea and ensure that our work will always be possible, our Endowment Campaign was publicly launched and has achieved tremendous success (see article on page 5). We urge you to join the hundreds of visionaries who have supported this historic effort.*

*The Board and I send a special message of thanks to Cindy Sterling of New York City, the outgoing chairperson of our Development Committee. She has given us three years of sterling service.*

*Throughout this past year, Astraea has just continued to raise our bar of achievement. We've seen the results, hearing from more and more of you with invitations to bring Astraea to your hometowns and receiving exceptional support to secure our future work. In the months ahead, we look forward to increasing Astraea's connection where you live and work.*

Cheryl Clarke  
Astraea Board of Directors

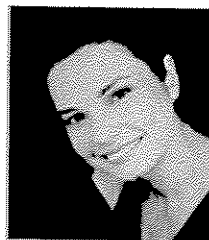
## New Astraea Leaders On-Board

*Astraea's Board of Directors is very pleased to welcome three new leaders to our work: Denise Liggett, Odalys Nanin and Gwen Walden. These women bring a wealth of experience, energy and resources to Astraea.*



**DENISE LIGGETT** is new to the Astraea family, first becoming involved through attending foundation events in the Spring. A financial consultant

at Axa Advisors, she also currently serves as an officer on the Board of the Gay, Lesbian, BiSexual Veterans of America's Washington, D.C. chapter. Denise will be joining our Finance and Investment Committee. She and her partner of three years, Tashamee Dorsey, live with their two dogs and cat in the Hyattsville section of Washington, D.C. In her spare time Denise is an aspiring golfer.



**ODALYS NANIN** has been involved with Astraea for several years as a grantee and volunteer. A seasoned actor, writer, director and producer, Odalys

is the founder and Artistic Director of MACHA Theater Co., a professional theater company for women of color and lesbians. She has received three Drama League Awards for performance, direction and production of *La Chunga*. Odalys's latest play, *Garbo's Cuban Lover*, opened in Los Angeles in mid-September, and she is currently at work on a screenplay version. Odalys lives in West Hollywood, Los Angeles.



**GWEN WALDEN** is a longtime fan and supporter of Astraea and is also involved in other LGBT philanthropy through Funders for Lesbian and Gay

Issues, where she has served on the Board since 1998. FLGI is a professional association of lesbians and gays in philanthropy dedicated to expanding resources for LGBT causes. Gwen is a Senior Program Officer at the California Endowment, California's largest health foundation. Gwen lives in Los Angeles, where she serves on the Board of Self-Help Graphics, LA's premier Chicano artists' organization, and is currently indulging her love of architecture while remodeling her home.

Astraea is seeking qualified and motivated women throughout the United States to serve on our expanded national Board of Directors. Board members actively participate in national and local fundraising efforts and events, serve on working committees, have financial oversight of and direct strategic planning for the Foundation. If you are interested in being considered for Astraea's Board of Directors, contact the Chair of Astraea's Board Nominating Committee Brenda Funches at [bfunc30714@aol.com](mailto:bfunc30714@aol.com) or Astraea's Board Chair Cheryl Clarke at [ccclarke@rutgers.edu](mailto:ccclarke@rutgers.edu).

# Panel Grants

FOR FISCAL YEAR 2000 TO 2001

We are pleased to share a list of Astraea grants selected by our community activist panels for this year. Our annual report, listing over \$1 million in total grants, will be available in Fall 2001. For more information about Astraea's Grants Program and the groups listed below, check our website at [www.astraea.org](http://www.astraea.org) or call us at 212-529-8021.

## U.S. Community Funding Panel Grants

Affinity Community Services, Chicago, IL	\$4,000
Austin Latino/a Lesbian & Gay Organization, Austin, TX	\$6,000
Center for Lesbian & Gay Studies-CUNY, New York, NY	\$4,000
Circus Amok, Brooklyn, NY	\$5,000
Dis-Scenting Opinion, San Francisco, CA	\$3,000
Dyke TV, New York, NY	\$8,000
ELLAS En Acción, San Francisco, CA	\$2,000
Esperanza Peace & Justice Center, San Antonio, TX	\$5,000
GRIOT Circle, Brooklyn, NY	\$5,000
Intersex Society of North America, Petaluma, CA	\$2,000
Jacksonville Area Sexual Minority Youth Network, Jacksonville, FL	\$2,000
Las Buenas Amigas, New York, NY	\$2,000
Literary Exchange, Chicago, IL	\$2,000
Milwaukee LGBT Community Center, Milwaukee, WI	\$3,000
Mujadarra Girls, San Francisco, CA	\$4,000

National Center for Lesbian Rights, San Francisco, CA	\$5,000
Network for Battered Lesbians & Bisexual Women, Boston, MA	\$2,000
North Carolina Lambda Youth Network, Durham, NC	\$2,000
Purple Moon Dance Project, San Francisco, CA	\$3,000
Queer Cultural Center, San Francisco, CA	\$4,000
Rainbow Place: Nevada's Gay & Lesbian Community Center, Reno, NV	\$2,000
Southerners on New Ground, Durham, NC	\$10,000
Spiderwoman Theatre, Brooklyn, NY	\$3,000
United Lesbians of African Heritage, Los Angeles, CA	\$5,000
Wise Fool New Mexico, Santa Fe, NM	\$4,000
Women's Community Education Project, Portland, OR	\$2,000
Youth Gender Project, Berkeley, CA	\$7,000
<b>Film/Video Projects</b>	
I Look Up at the Sky Now, New York, NY	\$4,000

Nuestra Salud, New York, NY	\$2,000
Poetic Healings, Austin, TX	\$3,000
sassy b. gonn: searching for black lesbian elders, Washington, DC	\$3,000
Sticks & Stones, Honolulu, HI	\$2,000
Sunshine Boutique, New York, NY	\$2,000
Yes: A Portrait of Joan Nestle, New York, NY	\$3,000

## International Funding Panel Grants

ACCEPT Bucharest Acceptance Group, Bucharest, Romania	\$6,000
ALTERA Association of Lesbian & Bisexual Women in Slovakia, Banska, Slovakia	\$9,340
CEPRESI-Centro Para La Educaci3n Y Prevenci3n Del SIDA, Managua, Nicaragua	\$5,000
Gays & Lesbians of Zimbabwe, Harare, Zimbabwe	\$2,500
Grupo L3sbico Patlatonalli De Guadalajara, Guadalajara, Mexico	\$7,000
Kontra Project, Zagreb, Croatia	\$6,000
"Labrys" St Petersburg Lesbian Organization, St. Petersburg, Russia	\$7,000
Lesbian Advocates Philippines, Quezon City, Philippines	\$4,250
Lesbian & Gay Equality Project, Yeoville, South Africa	\$6,000
Mujeres y Cultura Subterranea, Mexico DF, Mexico	\$4,500
Sangini Project, New Delhi, India	\$8,000
OLA-Archiwum Polish Lesbian Archives, Warsaw, Poland	\$5,800
Our World Gay & Lesbian Center, Lugansk, Ukraine	\$3,500
SIGLA Sociedad Integraci3n Gay-L3sbica Argentina, Buenos Aires, Argentina	\$6,000
Telemanita/Teta-Teta TV Tepoztlan, Morelos, Mexico	\$4,000
Triangle Project, Woodstock, South Africa	\$4,000
Women's Support Group, Columbo, Sri Lanka	\$10,000
Yayasan Gaya Celebes, South Sulawesi, Indonesia	\$5,000

## New Staff at Astraea



Astraea is proud to welcome several new faces to our staff. Recently joining the team are (left to right) Petrina Hicks, Development Assistant; Helen Lang, Director of Finance and Administration; and Laura Miller, Assistant to the Executive Director.

**A**native of Manhasset, Long Island, **Petrina** comes to Astraea directly from Pace University where she was an assistant to the Director of Major Gifts and Planned Giving. A 24-year-old NYU graduate, she is a Board Member of African Ancestral Lesbians United for Social Change. Petrina lives in Leffers Garden, Brooklyn and hopes to get more young women involved with the work of Astraea.

**Helen** lives with her partner, Carole Maso, and their three-year-old daughter, Rose, in NYC and the Hudson Valley. A Columbia Business School MBA, Helen comes to Astraea after working for numerous non-profits including Children's Rights, the Legal Aid Society and the Cummington Community of the Arts. Formerly a fire-eating Lesbian Avenger, Helen, 45, now restricts her use of fire to culinary endeavors.

Brand new to NYC and Astraea's work, **Laura** comes to us directly from Phoenix, Arizona. She was most recently the Director of Community Policy at Arizona Attorney General Janet Napolitano's Office, after serving as the Field Director for Ms. Napolitano's campaign. A 30-year-old Political Science graduate from Arizona State University, she was on the Board of the Arizona Human Rights Fund (an LGBT political advocacy organization), and an active member of the Stonewall Democrats in Arizona. She and her partner, Cara Vera, live in New Jersey.

## Upcoming Grants Deadlines

- ✓ US Grants Program: January 15, 2002
- ✓ International Fund for Sexual Minorities: November 15, 2001
- ✓ Lesbian Writers Fund: March 8, 2002

Check our website at [www.astraea.org](http://www.astraea.org) or e-mail [grants@astraea.org](mailto:grants@astraea.org) for the latest deadlines and application forms.



# Supporting Your Family AND Your Community

By Cindy Sterling

When you do estate planning, you need to be smart. You want to create a plan that meets your goals. Regardless of how much or little you own, your estate can only go to one of three places: family or friends; charity and taxes. Most people want to maximize the money going to family, friends and charity, and minimize taxes.

If this is your goal and you are planning to give money to charity at death, you may want to give your retirement plan instead of making a charitable bequest in your will. By structuring your gift this way, you may actually provide more support to your family and friends.

Retirement plans are expensive gifts to give family and friends. If you give your retirement plan to your partner at your death, she will be taxed on all the distributions she receives. If, due to financial need, for example, she takes all the money out of the plan at once, she will face a steep tax bill, leaving her with far less than you intended.

Let's take the case of Emily and Audrey. Emily has \$100,000 in her retirement plan. She also owns some stock worth \$100,000, so her total estate is worth \$200,000. Since Audrey is financially secure, Emily decides, at her death, that she wants to leave \$100,000 to her favorite charity and \$100,000 to Audrey. The problem is Audrey will have to pay income tax on the proceeds if she gives Audrey her IRA. If Audrey withdraws the entire IRA, she could lose as much as \$39,100 (39.1%)\* in the income tax, leaving her with \$60,900 or approximately 61% of the original gift amount. (See Graph 1).

Emily can easily resolve this problem by simply switching which asset she leaves to Audrey and to charity. If Emily names the charity as the beneficiary of her IRA, the charity pays no income tax and receives the full \$100,000. More importantly, if Emily gives Audrey her stock, Audrey receives the \$100,000 tax-free. (See Graph 2). By using retirement plan assets for her charitable gift instead of the stock, Emily was actually able to increase the size of Audrey's bequest.

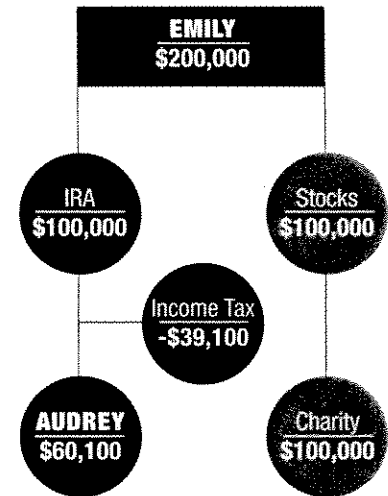
If you want to make a charitable gift and provide for your partner or family members, you may want to consider leaving your retirement plan (or a portion of it) to charity and other non-retirement assets to your family or partner through your will. Not only can you support your favorite charity, but, more importantly, you may also provide more money to your family.\*\*

\* New 2001 top income tax rate.

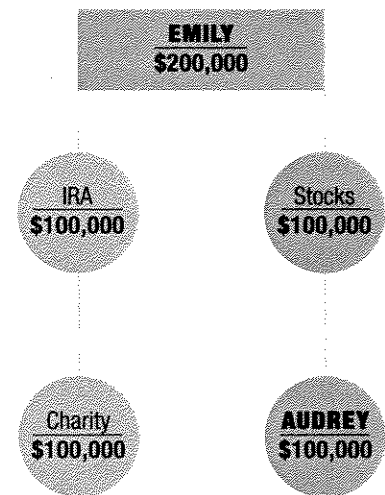
\*\* When planning your estate, it is always advisable to review your plans with your attorney or advisor.

For more information on planned giving or including Astraea in your will, contact Astraea Deputy Director Karen Zelermyer at [kz@astraea.org](mailto:kz@astraea.org) or 212-529-8021 xt 17.

GRAPH 1

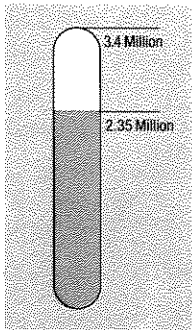


GRAPH 2



*Cindy Sterling, Chartered Financial Consultant, just completed her Board term at Astraea and has led numerous seminars on planned giving across the country and for Astraea's "Smart Women, Smart Money" conferences. She recently led an Astraea Board training geared for lesbians and their partners, exploring how we can take care of our families and maximize our support to community organizations.*

# In the Home Stretch



Astraea is proud to report that just 10 months since our public launch of the Astraera Campaign Challenge, our supporters have helped put us well over

the mark. As of press date, together we have raised \$2.35 million, two-thirds of the way towards our goal of a \$3.4 million endowment for our community.

Following launch events in NYC, San Francisco and Santa Fe, Astraera has received campaign contributions from more than 100 individuals, couples and foundations across the country. Notably, the vast majority of contributors tell us that their campaign gift is the largest single donation they have ever made—whether they are lesbians, straight allies or gay men, longtime supporters or new to Astraera.



"This is truly a 'People's Campaign.' We want everyone to participate. It is taking all of us together—lesbians, gay men, allies and queers from every corner of our diverse communities, to reach our goal. Personally, it's been liberating and empowering just to ask, let alone to receive so generously, and get such resounding support from all corners."

*Léonie Walker, Astraera Campaign Co-Chair*

Over and over, campaign partners affirm that Astraera is so important to them because of our unwavering commitment to our community and a broader social justice movement. Astraera's emphatic support for anti-racist, multi-racial, cross-class social justice work that honors, promotes and ensures lesbian leadership and visibility is, they've echoed, invaluable.

The Astraera Challenge is one of the most ambitious, visionary projects we've embarked on since our founding 24 years ago. Together, Astraera and our Campaign Partners are creating a permanent financial reservoir for our community. Well into the next century, the money we raise now will

fund countless projects whose value and impact is immeasurable. Lesbian community centers, hotlines, media, youth and senior groups; lesbian and feminist cultural projects, films, videos and up-and-coming writers; a thriving network of health projects; housing, job protection and advocacy groups; and civil and human rights organizations working in our backyards, across our states, the country and the globe. All of these endeavors will be nurtured and strengthened by the Endowment. There is still time to be part of this historic undertaking and help us cross the finish line by June, 2002.

Join us. Challenge yourself.  
Empower our community.

"Some people never believed we'd be able to raise \$3.4 million from lesbians and their allies. But individuals who've supported Astraera for years have been so willing to give some of their biggest gifts ever for the Endowment. This is amazing to me. And it reflects that Astraera is growing as we keep true to our mission and our vision. We are so close to our goal now, it's exciting!"



*Sandra Robinson, Astraera Campaign Co-Chair*

## Campaign Partners as of October 5, 2001

**LUMINARIES**  
(\$350,000 and above)  
Ise Bosch

**VISIONARIES**  
(\$100,000 and above)  
David Becker  
Diane Bernard & Joan Heller  
Lynn Gernert & Susan Weiler  
Nancy Meyer & Marc Weiss  
Kate O'Hanlan & Léonie Walker  
Dorothy E. Sander & Joyce P. Warshaw  
Anonymous (3)

**INSPIRERS**  
(\$50,000-\$99,000)  
Carol Alpert & Sarina Scialabba  
The Brico Fund  
Jody Laine & Shad Reinstein  
The Sister Fund  
The Underdog Fund / Tides Foundation

**INNOVATORS**  
(\$25,000-\$49,999)  
Merle C. Chambers  
Juanita Deans & Sandy Robinson  
Tracy D. Gary  
Tracy Hewat & Jane O'Connor  
Dee Kenny & Barbara J. Wright  
Kathy Levinson / Lesbian Equity Fund of Silicon Valley  
Sidne J. Long  
Shelley Mains & Angela Wessels  
Jan Marks  
Sharon Rich & Nancy Reed  
Emily Rosenberg

**SUSTAINERS**  
(\$10,000-\$24,999)  
Katherine Acey  
Ann Benson & Iris Harrell  
Chiqui Cartagena & Jennifer Knight

Roberta Cherkin & Michael Preston  
Marta Drury  
Brenda Funches  
Denise Kleis & Beth Salerno  
Donna Korones  
Cynthia McLachlan  
Barbara Meyer  
Gaylord Neely / Gaea Foundation  
Ann Northrop  
Nancy Polikoff  
Rachel E. Pray & Laura Weinstock  
Jennifer Wilson  
Anonymous (2)

**IDEALISTS**  
(\$5,000-\$9,999)  
Marge Adam  
Ward Auerbach  
Josephine Cole  
Ann Delaney

The Ettinger Foundation  
Tami Gold & Karen Zelermyer  
Liz Hirsch  
Marilyn Lamkay  
Kerry Lobel  
Mickey MacIntyre & T. Scollay Petry  
Cynthia O'Neill & Eleanor Thomas  
The Peachtree Fund and Carolyn Cavalier Rosenberg  
Maryann Simpson & Cynthia T. Asprodites  
Victoria Watkins  
Joan Watts  
Janet C. Wilson  
Anonymous (2)

**NURTURERS**  
(\$2,500-\$4,999)  
Joanne Cancro & Mariko Kamio  
Meredith Rose & Diane Selig

**BENEFACTORS**  
(\$500-\$2,499)  
Kimberly Aceves-Denyer & Chris Lymbertos  
Barbara Balliet & Cheryl Clarke  
Mary & Warren Campbell  
Constance Cohrt & Amy Reichman  
Julie Dorf & Jenni Olson  
Martha Easter-Wells  
Celeste Gainey & Elise D'Haene  
Paige Gillies  
Jean Hardisty  
Ruth Herring  
Susan Hester  
Susanne Iasenza, Ph.D.  
Jocelyn Kaplan  
Marion & Irwin Kaplan  
Deborah Landau  
Terry Lawler & Chris Straayer  
Josh Maiman  
Joanne Markell

Susan Matsumoto & Melvin Kennedy  
Cindy Miller  
Karuna Neustadt  
Patsy Rogers  
Suzanne Stager  
Cindy Sterling  
Colleen Tate  
Jane Thurn  
Mare & Laurie Wallace  
Barbara Winslow  
Woodcock #3 Foundation  
Su Ming Yeh  
Anonymous (1)

## New Possibilities in Croatia

Founded in 1997, **Kontra—Project for Lesbian/Feminists in Zagreb**, Croatia is a vital safe space for lesbians in the post-war era. Conditions under the recently fallen dictatorship had severely restricted lesbian visibility and activism. In the aftermath of militarism, war, religious fundamentalism, racism and anti-Semitism, Kontra has created a community space for lesbians and supported their political work. Kontra sponsors Zagreb's only (and Croatia's first) lesbian SOS phone hotline, and also provides counseling, social and cultural programs for lesbians in the region. The group holds trainings on violence, self-defense, feminism and documentary arts, and hosts sporting and social outings. Kontra's presence has enabled many women to fight isolation and anonymity and served as a springboard for collective anti-fascist and pro-democracy activism among Zagreb's lesbians. The group has publicly fought homophobia, promoted lesbians and women's rights and connected sexual orientation and gender oppression to human rights concerns and militarism.

In Croatia, the social, economic and cultural impact of the recently fallen dictatorship and civil war still pose huge challenges for everyday life. For LGBT folks, the environment has improved a bit with the arrival of the new government, but no public person from any field—politics, sports, the arts—has yet to publicly come out. However, Kontra believes their work has already had significant inroads in this new environment. Journalists have increasingly asked for the group's analysis on the new changes in Croatia's Constitutional Law that will contain provisions regarding sexual equality and sexual orientation freedoms.

Over the last several years, Kontra has also successfully used the arts to gather and educate lesbians. In early 1999, the group presented an international photo exhibition that was created in Amsterdam called "Lesbian ConneXion/s" at the gallery of the Center for Culture and Education of the City of Zagreb (CEKAO). This was the first open and public lesbian event in Croatia. Later that year, Kontra also sponsored their first locally-based photo exhibition "Lezbyska Foto Ljetvica (Lesbian Photo Ladder)." More than 60 women attended the opening that fell on the day Croatia's dictator-president Franjo Tudjman died, and all public events were forbidden. Building on this work, Kontra has held photo and video workshops and embarked on a translation project of some seminal Western lesbian feminist essays into Croatian.

Kontra is broadening its leadership of regional lesbian issues by helping to organize and host "A Working Meeting for Creating A Lesbian Platform for the Post-War Ex-Yugoslav States." This gathering will be held September 2001, in Rovinj, a small town on the northern Adriatic coast in Croatia. Kontra played a key role in the first meeting of the "Lesbians of the Former Yugoslavia," and this meeting is a joint effort with an organization they have strong ties to in Belgrade, Serbia—Labris: Group for Lesbian Human Rights. The meeting hopes to strengthen networks between seasoned lesbian organizers in Slovenia, Croatia, Serbia and Kosova. Among the issues that will be discussed are challenges facing lesbians in the development of the new democracy and civil state; what work can be done to affect legislative freedoms; and how their regional experience as anti-violence activists relates to other lesbian activism across Europe. More than 35 lesbian activists from the former Yugoslavia will attend, along with several foreign allies.

For more information about Kontra or Astraea's International Fund for Sexual Minorities contact Astraea Program Officer Tang Suvarnananda at [anjana@astraea.org](mailto:anjana@astraea.org) or 212-529-8021 xt. 13.



Top: Kontra members, including coordinator Dubravka Kordic (*second from left*) at an antifascist demonstration in Zagreb, Croatia.

Center & Bottom: Kontra members, Zagreb, Croatia.

All photos courtesy Kontra

# VICTORY IN SAN ANTONIO

Texas has come to the White House. And, justice is coming to Texas. Astraea grantee, the **Esperanza Peace and Justice Center**, a longtime cultural and political center for the city's mostly Latino and African American community, has won a substantial court victory in San Antonio, helping to set back the city's rightwing.

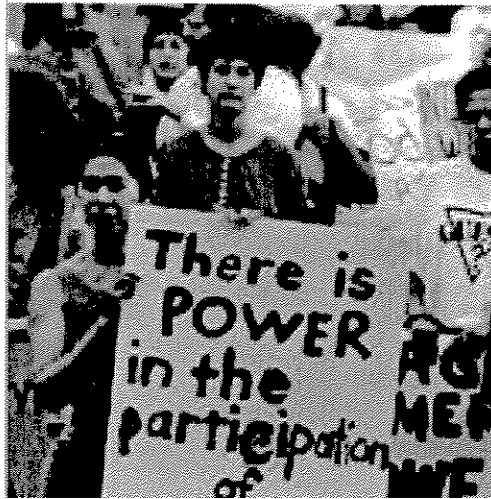
As previously reported in the Astraea Bulletin, in 1997 and 1998, after more than six years of financial support by the City of San Antonio, Esperanza (and two smaller organizations it sponsors) was de-funded by the City Council and barred from re-applying for support. This historic renegeing of the city's dollars was the first of its kind ever in San Antonio. As was later revealed, the action was a direct attack on Esperanza because of their sponsorship of a lesbian and gay film festival—"Out at the Movies"—and activities like ceramics classes with visiting Mexican artisans that San Antonio's Mayor Howard Peak deemed were "too political."

In 1998, Esperanza and their more than 6,000 community supporters, took the City of San Antonio to court and launched

future risk of the kind of targeting and discrimination Esperanza experienced."

Esperanza sought more than half a million dollars in damages from the city—funds that Esperanza would have been eligible for if San Antonio hadn't barred the group from the city funding process. In his decision, Judge Garcia divided the "liability from the remedies," clearly stating that San Antonio violated Constitutional protections but leaving the settlement up for negotiation. Esperanza is now back in court trying to successfully recoup what they lost.

Photo courtesy Esperanza Center

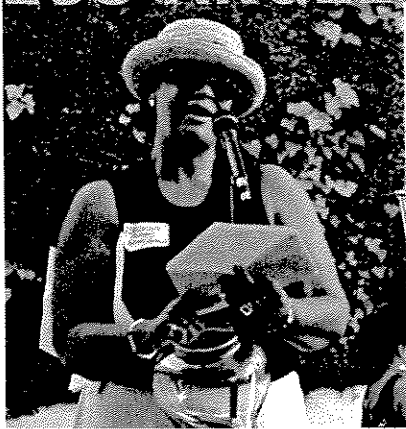


out by the end of September. They were also battling a last minute public relations smear campaign, following a leak by the city about the financial damages despite a judge's order for both parties to maintain confidentiality. Esperanza still expects to recover about \$500,000, but will not settle the case without the consent decree in order.

Their victory is so important, notes Esperanza Executive Director Graciela Sanchez, because "the right-wing has been engaged in a culture war and tried to use the power of the government to suppress cultures they don't like. This decision could set a meaningful precedent by holding that the government has to stand firm against hateful rhetoric, and cannot just discriminate against us because of our lifestyles and views; that government funding can not be withheld just because they disapprove of us."

Astraea's support of Esperanza during this struggle has been especially meaningful, added Sanchez. "Astraea was the only national organization who took the time to respond to our cries for help. Astraea was the only organization to give us emergency support when the de-funding happened.

# LOS ANGELES



Astraea Board member Brenda Funches at Astraea's Los Angeles Event.



Party attendees at Astraea's Los Angeles Event hosted by Gwen Baba and Nichole Conn.

# HAMPTONS



Hosts Marilyn Lamkay (*far left*) and Barbara Glassman (*seated*) and guest at Astraea's Hampton's Event.

# Astraea EVENTS Road Map

# SAN FRANCISCO



Eiana Dykewomon



Nedra Johnson



Dorothy Allison



Performers at Astraea's San Francisco Lesbian Writers Event (*from left*) Ronnie Gilbert, Jewelle Gomez, Carolyn King, Desi del Valle, Emily Bender, Rachel Bolden-Kramer and Copper Wimmin.

# NYC



At Women Who Rock, Astraea's anniversary party in NYC (*left to right*) emcee Jewelle Gomez with her partner and honoree Dr. Diane Sabin.

# WOMEN



(*Left to right*) Performer Holly Near with Astraea Board Chair Cheryl Clarke and Deputy Director Karen Zelermyer.

# WHO



Event producer Virginia Giordano (*second from left*) celebrates with event Co-Chairs (*Left to right*) Chiqui Cartagena, Jennifer Knight and Samira Ibrahim.

# ROCK



Honoree Candice Boyce (*standing at far left*) and her partner Linda Rice (*seated at far left*) and friends.



ASTRAEA LESBIAN ACTION FOUNDATION PRESENTS THE WORLD PREMIERE OF

# Hand on the Pulse

a new film by  
Joyce Warshaw

**14th Annual Lynn Campbell  
Memorial Fund Benefit  
Wednesday, November 14, 2001**

*Hand on the Pulse* is the story of Joan Nestle, critical and sexual "bad girl." Founder of the Lesbian Herstory Archives, author and teacher, Joan has made a significant contribution to our understanding of women's sexuality, gender issues and the preservation of lesbian herstory and culture for the last half century.

Astraea established the Lynn Campbell Memorial Fund in honor of a friend and supporter of the Foundation. During her brief 28 years, Lynn devoted her immense talents and energies to many social justice issues including the women's, labor and lesbian and gay movements. Astraea's Community Funding Panel annually designates grants from the Lynn Campbell Memorial Fund to organizations and projects that best represent Lynn's commitment, activism and vision.

**With Special Guests**

Joan Nestle  
Joyce Warshaw

7pm Screening  
8pm Reception

**THE LIGHTHOUSE**  
111 East 59th Street  
Between  
Park & Lexington Avenues

For tickets or more information, call 212.527.8021



**Staff**

Katherine Acey, *Executive Director*  
Kim Ford, *Events Manager*  
CJ Griffin, *Program Assistant*  
Petrina Hicks, *Development Assistant*  
Jazmine Irizarry, *Office Manager*  
Helen Lang, *Director of Finance and Administration*  
Christine Lipat, *Senior Program Officer*  
Laura Miller, *Assistant to Executive Director*  
Mel Sage (Clemans), *Assistant to Deputy Director*  
Tang Suvarnananda, *Program Officer*  
Karen Zelermyer, *Deputy Director*

**Board of Directors**

Kimberley Aceves-Denyer, *San Francisco, CA*  
C.C. Carter, *Chicago, IL*  
Cheryl Clarke, *Jersey City, NJ*  
Brenda Funches, *Los Angeles, CA*  
Jennifer Knight, *New York, NY*  
Terry Lawler, *New York, NY*  
Denise Liggett, *Midlothian, VA*  
Odalys Naniin, *Los Angeles, CA*  
Sandy Robinson, *Bethesda, MD*  
Eleanor Thomas, *New York, NY*  
Gwen Walden, *Woodland Hills, CA*  
Leonie Walker, *Portola Valley, CA*  
Su Ming Yeh, *Philadelphia, PA*

**Community Funding Panel**

Mary Li, *Facilitator, Portland, OR*  
C. Hope Artichoker, *Minneapolis, MN*  
Trang Duong, *Anchorage, AK*  
Ju Hui Judy Han, *Oakland, CA*  
Donna Korones, *Berkeley, CA*  
Connie Leeper, *New Market, TN*  
Nusrat S. Retina Rabbiee, *Jamaica Plain, MA*  
Renée Sánchez, *Oakland, CA*  
Barbara Turk, *Brooklyn, NY*

**International Grants Panel**

Marta Drury, *Half Moon Bay, CA*  
Kagendo, *New York, NY*  
Nguru Karugu, *New York, NY*  
Dora Helen King, *Chicago, IL*  
Scott Long, *New York, NY*  
Javid Syed, *New York, NY*

**Contact Astraea**

Write us: 116 East 16th Street, 7th Floor  
New York, NY 10003  
Call us: 212-529-8021  
Fax us: 212-982-3321  
Email us: info@astraea.org  
Click us: www.astraea.org

**Editor** Cynthia Greenberg

**Design** Doris Halle Design NYC

**Printing** Greenlight Communications

**Our Mission**

Astraea Lesbian Action Foundation is a feminist public charity whose purpose is to advance the economic, political, educational and cultural well-being of lesbians, their families and allies working for social justice. Our mission is enacted through a variety of programs including grantmaking, training and technical assistance, philanthropic advocacy and education, and fundraising.

**Who is Astraea?**

Astraea or "Starry One" was the Roman title of the Goddess of Holy Law or Libra, and was also known as the Goddess of Justice. In most ancient writings, Astraea is associated with natural law, matriarchal justice, and the personification of truth and justice.

## Lesbian Visual Arts Awards 2002

Astraea Foundation is pleased to announce the establishment of its newest grants program: the Lesbian Visual Arts Awards. In its first year, two \$1,000 grants will be awarded to artists working in any of the following mediums: sculpture, painting, prints, work on paper or mixed media. Submitted works will be juried by members of the Astraea Visual Arts Committee and staff. **Deadline for submissions is February 25, 2002;** decisions will be made by April 8, 2002. The application can be accessed through Astraea's web site at [www.astraea.org](http://www.astraea.org) or by calling the office.

The Astraea LVA Project exists to promote awareness and bring visibility to contemporary lesbian artists. The committee organizes events and educational panels and commissions renowned artists to provide limited-edition prints that are sold to support Astraea's programs.

The newly established Lesbian Visual Arts Fund has been established with the generous lead support of Astraea Founding Mother and artist Joan Watts and Shirley West, a New York City based sculptor. Astraea will be actively fundraising for this Fund and hopes to see it grow significantly in the the months and years ahead.

For more information about the Astraea Lesbian Visual Arts Project or the Lesbian Visual Arts Fund contact Astraea Deputy Director Karen Zelermyer at [kz@astraea.org](mailto:kz@astraea.org) or 212-529-8021 ext. 17



## Setting Goals and Objectives

*"Afraid is a country with no exit visas," says the late poet Audre Lorde in her somber poem, "Diaspora," detailing the horror of war and violence. Astraea's giving has crossed all kinds of national and international, sexual, gender, artistic and political borders with strategic courage and humility. Staff and Board members are preparing to round out our fundraising imperatives for 2001-02 so that we can continue to cross those philanthropic borders and sustain our work once there. The U.S. General Grants Fund, the International Fund for Sexual Minorities, the Lesbian Writers Fund, our Donor Advised Funds and all of our avenues of philanthropy are possible because of your continued and generous support. These avenues are our "exit visas."*

*As Astraea enters its 25th year, its silver anniversary, Board and Staff will be initiating a new Strategic Plan. We will be setting our organizational goals and objectives for the next three years and evaluating our Mission. Is it inclusive enough? Is it still relevant to the concerns and needs of those who lead "programs that actively work to eliminate those forms of oppression based on race, age, sex, economic exploitation, physical and mental ability . . ." You, our supporters, are the women and men who, as Lorde says, "wait for something to change and nothing does, so they [make] change themselves." And that is Astraea's mission.*

*All the best,*

## New Staff at Astraea

### Join the Board

Astraea is seeking qualified and motivated women throughout the United States to serve on our expanded national Board of Directors. Board members actively participate in national and local fundraising efforts and events, serve on working committees, and have financial oversight of and direct strategic planning for the Foundation. If you are interested in being considered for Astraea's Board of Directors, contact the Chair of Astraea's Board Nominating Committee, Brenda Funches at [breninsilverlake@earthlink.net](mailto:breninsilverlake@earthlink.net) or Astraea's Board Chair, Cheryl Clarke at [cclarke@rutgers.edu](mailto:cclarke@rutgers.edu).

Sonja Sivesind grew up in the suburbs of Seattle. She moved to New York in October, 2001 after traveling the country interviewing grassroots social change organizations about their anti-oppression work. Before that she lived in the San Francisco Bay Area working as the Coordinator of the Prison Activist Resource Center. She has worked as a Development Associate at Astraea since December 2001.



HELEN LANG



HELEN LANG

Born and raised in California, Patricia Justine Tumang left the West Coast in 1998 to pursue her college education in New York City. She received a B.A. in Cultural Studies with a path in Race, Ethnicity and Post-colonialism from Eugene Lang College in 2001. Her commitment to anti-racist

feminism from a queer Filipina-American perspective permeates her life and writing. Her first published essay is featured in the upcoming anthology *Colonize This! Young Women Of Color On Today's Feminism* (Seal Press, Fall 2002). She has been Astraea's Administrative Assistant since January 2002.

# Women Will

## A PROFILE OF A PLANNED GIVER



WHEN VICTORIA WATKINS MOVED FROM SAN FRANCISCO TO NEW YORK IN 1996, SHE WANTED TO GET INVOLVED IN THE LESBIAN COMMUNITY.

One Saturday afternoon shortly after she arrived in town she picked up the phone and called the Astraea Foundation, expecting to leave a message. Instead, she got right through to Astraea's Executive Director, Katherine Acey. As Victoria describes it, Katherine "welcomed me, answered my questions, and asked me to volunteer."

Victoria responded to that request generously. As a volunteer, Victoria has helped organize a house party in Brooklyn, signed up corporate sponsors, and lent a hand at numerous events. Most importantly, she had found the lesbian community she was looking for. "I wasn't a stranger in town anymore," Victoria recalls, "I've made wonderful friends through Astraea."

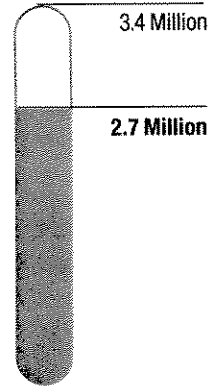
In addition to her extensive work as an Astraea volunteer, Victoria's financial support has proven critical to Astraea's ongoing success. An annual donor since the beginning of her involvement with Astraea, Victoria has also made a gift to the Endowment Campaign. She describes how she aligned her financial giving with her personal values: "I wrote a mission statement...which highlighted supporting nonprofit organizations advancing lesbian rights. I created an annual giving plan and itemized budget so specific groups supporting my objectives will receive donations." Citing Astraea's membership and Endowment Campaigns as "priorities" for her annual gifts, Victoria is confident in Astraea's "motivation and expertise to fund important lesbian community-based projects, not only in the U.S., but around the world."

Shortly after her father died unexpectedly in 1995, Victoria wrote her will. She later decided to name Astraea as a beneficiary, something she was inspired to do after participating in a workshop on lesbian philanthropy at Astraea's Smart Women/Smart Money conference in September 1999. Planned giving and bequests such as Victoria's are significant ways that donors can continue to make a difference well into the future.

The provision of resources to causes she cares about, is a major consideration in both Victoria's philanthropic giving and estate planning. She is especially pleased about the long-term positive impact of her planned giving. "It feels good to know that after I'm gone, I'll still be doing something really worthwhile."

For more information about bequests or planned giving, contact Karen Zelermyer at (212) 529-8021 ext. 17, kz@astrea.org.

The **Astraea** Challenge  
A CAMPAIGN TO EMPOWER  
ENDOWMENT CAMPAIGN UPDATE MAY 1, 2002



With a few short months left until the official end of The Astraea Challenge: A Campaign to Empower and \$700,000 still to raise, we are pushing hard to achieve our \$3.4 million goal. It is a challenge we intend to meet and exceed.

If you have already made your gift or pledge to the Campaign, thank you.

If you have not, now is the time.

## WOMEN WILL: A GIVING CIRCLE FOR WOMEN WHO HAVE MADE PLANNED GIFTS AND BEQUESTS TO ASTRAEA FOUNDATION

ASTRAEA HAS BEEN THE BENEFICIARY of gifts entrusted to us by generous and farsighted donors. Too often, these gifts have gone unrecognized because they have come at the end of a donor's life.

The Women's Will Circle provides a way for Astraea to recognize and thank donors who have designated us as a beneficiary of their estate during their lifetime and to involve them more intimately in the Foundation's work.

Women's Will Circle members will be recognized in Astraea publications and at special events.

The list of Women's Will Circle members listed below includes only those women who have informed us in writing that they have included Astraea in their estate plans.

If you have designated Astraea as a beneficiary in your will, insurance policy or retirement fund, please notify us so we can include you in our Circle.

### Gifts In Honor Of

- Tracy Gary
- Elizabeth Armstrong and Stacey Dakai
- Terri Elkin and Adena Gilberts
- Ann Tobin
- Rose Walton and Marge Sherwin
- Ruby Jo Day
- Jill Campbell

### In Memory Of

Diane Dimarco  
To give a gift in honor or in memory of someone, contact Astraea at info@astreae.org or 212-529-8021 xt. 20, or send in a pledge envelope filling out the appropriate section.

### Women's Will Donors

- |                  |                    |
|------------------|--------------------|
| Katherine Acey   | Marjorie Lightness |
| Diane Bernard    | Kate O'Hanlan      |
| and Joan Heller  | and Léonie Walker  |
| Gail Bernstein   | Joni Ross          |
| Melanie Berson   | Stephanie Roth     |
| Pam Calvert      | Dixie Sheridan     |
| Donna Cassyd     | Cindy Sterling     |
| Debra Hirschberg | Victoria Watkins   |
|                  | Jan Zobel          |



## PASSION, INCLUSION, COMMITMENT:

### *A Board Member's Journey to Astraea*



Inspiring.

Amazing.

Impressive.

These are just some of the adjectives Su Ming Yeh uses to describe her work as a member of Astraea's Board of Directors, particularly

when applied to her colleagues on the Board. "I feel so honored to be a part of this group of talented, intelligent, thoughtful women. Sometimes I can't believe I'm among them."

A modest reflection considering that Su Ming has a remarkable list of accomplishments and experiences of her own. She was a science teacher in Tonga as a member of the Peace Corps and was the former Executive Director of Asian Professional Extension Inc. (an Asian American mentoring program). She worked for both Funders Concerned About AIDS and the Coalition for Asian American Children and Families and ran an after-school program in the South Bronx. All this before being chosen as one of only four annual Public Interest Scholars at the prestigious University of Pennsylvania Law School, where the 30 year old is now finishing her first year as a law student.

A donor since 1997 and a member of the Board of Director's since 2000, Su Ming recalls becoming interested in Astraea after receiving an invitation to a house party. "When I attended the event I met (long-time Astraea member and then-Chair of Astraea's Board) Mai Kiang and decided to get involved." Members of the Astraea family frequently note that once an introduction to Astraea is made, it

*"at Astraea the practice of inclusion is not just a token nod to diversity, not just an add-on, but is vigorously pursued throughout the entire organization, from grantmaking to staff to management to the Board"*

is often the beginning of a lifelong relationship. This appears to be the case with Su Ming as well. "I was initially drawn to Astraea because of their mission to advance the well-being of lesbians through fostering social change, and I was impressed by the International Fund grants program for LGBT activists at the grassroots level." She has remained involved because of what she sees as Astraea's leadership in grantmaking and a demonstrated commitment to diversity.

"Astraea really is at the forefront of working for social justice. And at Astraea the practice of inclusion is not just a token nod to diversity, not just an add-on, but is vigorously pursued throughout the entire organization, from grantmaking to staff to management to the Board. I find such passion, not just for the value of diversity but for the incorporation of intersections—of race, class, age, ability, of differences of any and all kinds— to be rare and, for me personally, inspiring."

During her tenure with Astraea, Su Ming has been witness to exciting growth. When the organization reached a \$2 million dollar annual budget, she felt it was "a testament to both Astraea's excellent leadership, and to the extent to which people believe in us and our mission." In addition to continued expansion, she envisions institutionalizing Astraea through the building of the Endowment as well as simultaneously "moving to help our grantees institutionalize themselves, allowing them to become sustainable long-term." The relationship between Su Ming Yeh and Astraea, as with all of Astraea's supporters, moves us closer to our mission of a just and peaceful world for lesbians and for everyone.

*For more information about serving with Su Ming Yeh on Astraea's Board of Directors, please contact Brenda Funches, Board Development Chair, at [breninsilverlake@earthlink.net](mailto:breninsilverlake@earthlink.net).*

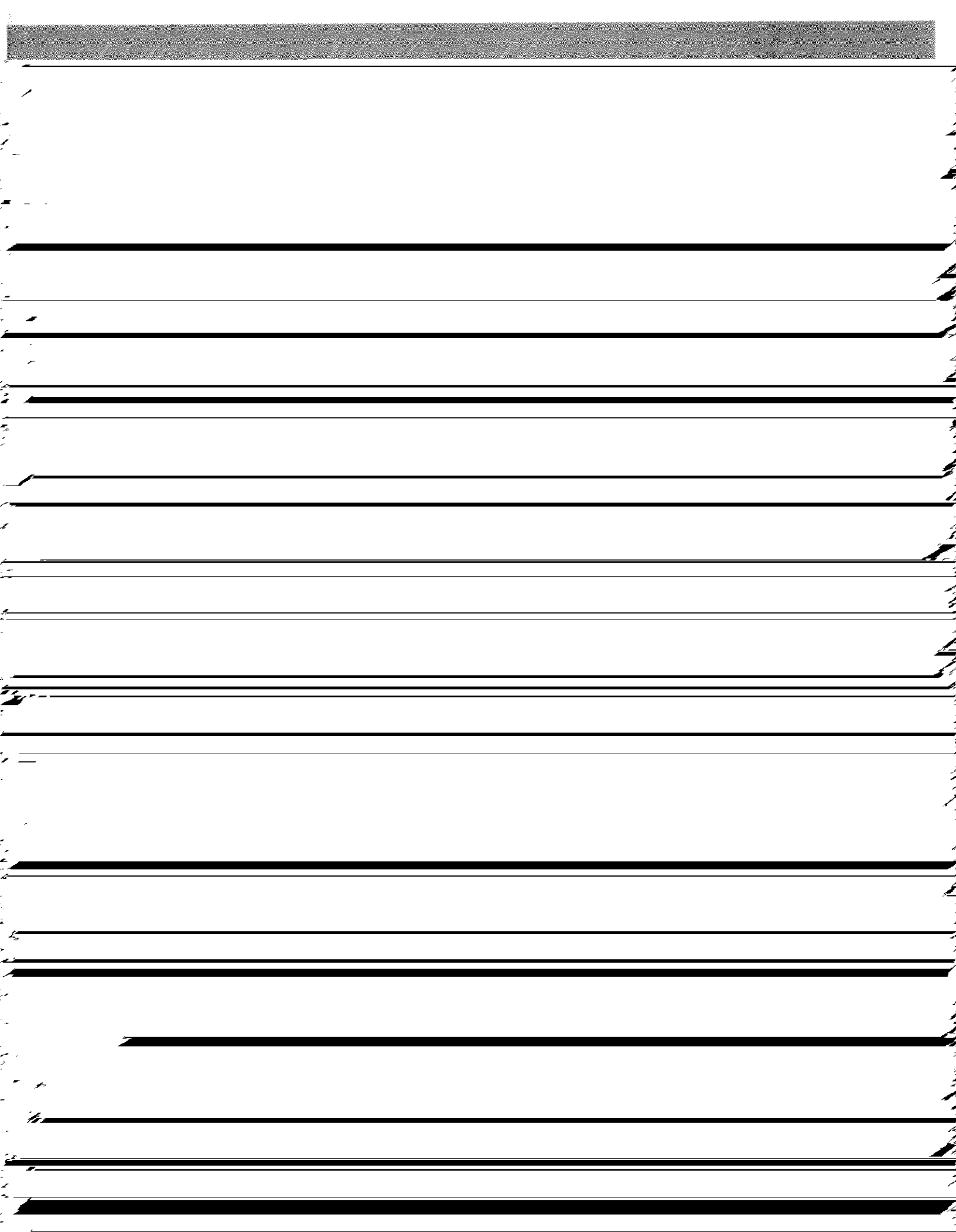
## We Recruit! We Need Your Help!

Astraea's membership campaign is in full swing, learn how you can be involved:

Astraea's members provide our core support—enabling our grants, philanthropic advocacy and public education programs. You can help us expand our membership and programs. Here's what you can do.

- ☛ **Renew** your membership if you haven't already done so.
  - ☛ **Introduce** your friends to Astraea and ask them to become members. We can provide you with materials to send to them or you can call, fax or email us with their names and we'll do it for you.
  - ☛ **Host** a party for 2 to 200 of your friends, share the good work of Astraea and ask them to become members.
- We've been told that we're the best-kept secret in the LGBT and Women's community. Get involved and help us spread the word!

For more information, contact Sonja Sivesind at [sonja@astraea.org](mailto:sonja@astraea.org) or 212-529-8021 ext.14





# Events at a Glance

*Look for our upcoming events in a city near you*

---

Saturday, June 1 Los Angeles, CA Tea Dance 5-8pm  
**Join us for Astraea's 3rd Annual LA Pride Party**

---

Saturday, June 15 Shelter Island, NY Barbecue 4-7pm Join this historic event where the North and South Forks meet on Shelter Island for our **11th Annual Astraea Party in Long Island**

---

August 10-15 Astraea and NCLR Ride For Pride 2002, Oregon. Join with 15 other beautiful bike riding women to tour the Oregon coast and raise money for Astraea. Contact Sonja at [sonja@astraea.org](mailto:sonja@astraea.org) or 212-529-8021 ext. 14 for more information.

## **Astraea Bulletin** Spring 2002

### **Staff**

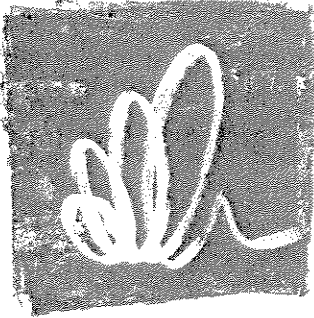
Katherine Acey, *Executive Director*  
Kim Ford, *Events Manager*  
CJ Griffin, *Program Associate*  
Petrina Hicks, *Development Associate*  
Jasmine Irizarry, *Office Manager*  
Helen Lang, *Director of Finance and Administration*  
Christine Lipat, *Senior Program Officer*  
Laura Miller, *Assistant to Executive Director*  
Sonja Sivesind, *Development Associate*  
Tang Suvarnananda, *Program Officer*  
Patricia Tumang, *Administrative Assistant*  
Karen Zelermyer, *Deputy Director*

### **Board of Directors**

Kimberley Aceves, *San Francisco, CA*  
Carol Alpert, *Brooklyn, NY*  
C.C. Carter, *Chicago, IL*  
Cheryl Clarke, *Jersey City, NJ*  
Brenda Funches, *Los Angeles, CA*  
Jennifer Knight, *New York, NY*

## **Astraea Past Events**

*Power of the Erotic*



## Astraea LESBIAN FOUNDATION FOR JUSTICE

Funding Change and Strengthening Communities Around the World

# New Name. New Look. *Same Mission.*

By Katherine Acey, *Executive Director*  
Brenda Funches, *Board Chair*

As we have reported throughout this past year Astraea has been engaged in a strategic planning process during which no program, activity or model of operation has gone unexamined. At the July 2003 meeting, the Board of Directors approved the plan, and we are delighted to share with you the highlights of our new strategic directions.

We are extremely excited about our new name, new look and most importantly the deepening of our work to support and sustain movement building efforts that promote justice. During this year of reflection, evaluation and analysis we maintained all of our grants, development and educational programs. As we move into implementation of our new plan, some activities will be diminished and others added. Deadlines for our various grants programs will also shift in this coming year. *Continued on page 7*

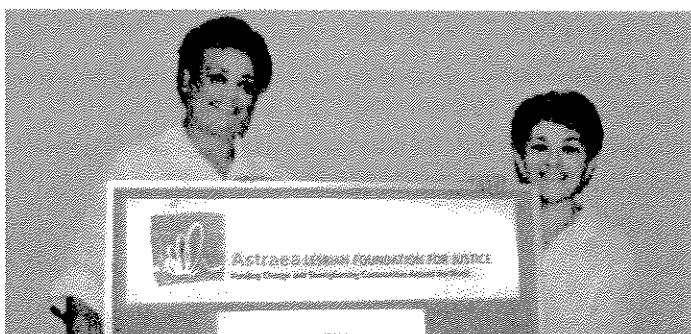
By Jennifer Einhorn,  
*Director of Communications*

For the past six months, we at Astraea have been immersed in an exciting process. The task at hand: how to more accurately represent the work we do and the communities we serve. It's been a thoughtful and dynamic time for us. With help from Astraea staff, board, volunteers, members—and fab designer, Astrid Lewis Reedy—we are proud to announce that we have a new way to tell our story.

**Our Name.** Formerly the Astraea Lesbian Action Foundation, we are now the Astraea Lesbian Foundation for Justice. We're still Astraea—and we still represent the qualities that Astraea, the Roman Goddess of Justice, embodied. Justice is the overarching theme of our work. It's our vision for the future and the glue that binds our community to a worldwide social change movement.

**Our Look.** Movement is the theme of our new logo. We've chosen an abstract image that symbolizes the momentum and vitality of our work. The mark is an organic one, and much like Astraea grantees, it grows, spirals and emits powerful energy. It floats in a woodcut frame—but one that has no sharp edges or precise borders. That's because true social change is propelled forward, from person to person, community to community, continent to continent. Astraea and lesbians around the world are touchstones for one another, and the spiral represents us both.

**Our Mission.** It hasn't changed a bit. *The Astraea Lesbian Foundation for Justice works for social, racial and economic*



## Women Will Meet Jomal Alcober

JOMAL ALCOBER, A LONG-TIME SOCIAL JUSTICE ACTIVIST, has listed Astraea as a beneficiary of her retirement accounts. A friend to Astraea for over a decade, Alcober attributes her decision to become a member of Astraea's *Women Will* Program because of her belief that Astraea's mission and values are similar to her own. "Women's leadership is so important in the current local and global political climate," she says, "...and Astraea is willing to address issues and support those people willing to take risks and leads on important issues around the world. I want to see that work continue."

Alcober was also moved to join *Women Will* when she reached a particular stage in her life and stated, "There comes a point in time when you begin to look at your own mortality and, given the fact that I don't have offspring, I wanted to become part of Astraea's longevity."

Extremely active in numerous social justice movements since the early 1970s, Alcober moved to New York in 1988 from Washington D.C., her home town. She is a former Human Rights



Specialist/Civil Rights Investigator of the New York City Commission on Human Rights, and is currently employed by a midtown Manhattan

law firm. A former student of Political Science and Public Policy at City College of New York, Alcober received several scholarships in Political Science, Public Policy and History, including four Congressional scholarships. She is also a jazz vocalist and published poet.

"I have seen many organizations come and go in the AIDS/HIV pandemic and through environmental and social justice movements, she said, and I am impressed with Astraea's consistency and willingness to dare to take a stand against oppression against women on the global scale." Having been a witness to and a contributing agent of various movements of social change over the last thirty-five years, Alcober remains inspired by Astraea's ideals: a commitment to justice in all its forms and a willingness to address issues at their core.

THE ASTRAEA FOUNDATION, INC.  
INDEPENDENT AUDITORS' REPORT  
ON  
FINANCIAL STATEMENTS  
AS OF JUNE 30, 2000  
AND  
FOR THE YEAR THEN ENDED

THE ASTRAEA FOUNDATION, INC.

- CONTENTS -

	<u>Page</u>
Independent Auditors' Report	1
Statement of Financial Position as of June 30, 2000	2
Statement of Activities for the year ended June 30, 2000	3
Statement of Cash Flows for the year ended June 30, 2000	4
Statement of Functional Expenses for the year ended June 30, 2000	5
Notes to Financial Statements	6-9
Independent Auditors' Report on Supplemental Information	10
Statement of Activities of the Affiliate Project - Working Group for Lesbian and Gay Issues for the year ended June 30, 2000	11
Statement of Activities of Affiliate Project - National Partnership for the year ended June 30, 2000	12



---

MEMBERS  
AMERICAN INSTITUTE OF CERTIFIED PUBLIC ACCOUNTANTS  
NEW YORK STATE SOCIETY OF CERTIFIED PUBLIC ACCOUNTANTS

INDEPENDENT AUDITORS' REPORT

To the Board of Directors  
The Astraea Foundation, Inc.  
New York, New York

We have audited the accompanying statement of financial position of The Astraea Foundation, Inc. as of June 30, 2000 and the related statements of activities, cash flows and functional expenses for the year then ended. These financial statements are the responsibility of The Astraea Foundation, Inc.'s management. Our responsibility is to express an opinion on these financial statements based on our audit.

We conducted our audit in accordance with generally accepted auditing standards. Those standards require that we plan and perform the audit to obtain reasonable assurance about whether the financial statements are free of material misstatement. An audit includes examining, on a test basis, evidence supporting the amounts and disclosures in the financial statements. An audit also includes assessing the accounting principles used and significant estimates made by management, as well as evaluating the overall financial statement presentation. We believe that our audit provides a reasonable basis for our opinion.

In our opinion, the financial statements referred to above present fairly, in all material respects, the financial position of The Astraea Foundation, Inc. as of June 30, 2000 and the changes in its net assets and its cash flows for the year then ended in conformity with generally accepted accounting principles.

*Winnie Tam & Co., P.C.*

New York, New York  
October 5, 2000

**THE ASTRAEA FOUNDATION, INC.**  
**STATEMENT OF FINANCIAL POSITION**  
**AS OF JUNE 30, 2000**

	<u>Unrestricted</u>	<u>Temporarily Restricted</u>	<u>Permanently Restricted</u>	<u>All Funds</u>
<b><u>ASSETS</u></b>				
<b>Current Assets</b>				
Cash	\$ 544,039			\$ 544,039
Accounts receivable	798			798
Pledges, grants and contributions receivable	105,960	\$ 13,952	\$ 131,598	251,510
Short term investments	502,752	128,318		631,070
Prepaid expenses	<u>14,578</u>			<u>14,578</u>
<b>Total Current Assets</b>	<b>1,168,127</b>	<b>142,270</b>	<b>131,598</b>	<b>1,441,995</b>
<b>Non Current Assets</b>				
Fixed assets, at cost, net of accumulated depreciation and amortization of \$70,821 - Note 1	36,478			36,478
Security deposits	6,000			6,000
Long-term investments			<u>743,304</u>	<u>743,304</u>
<b>Total Assets</b>	<b><u>\$ 1,210,605</u></b>	<b><u>\$ 142,270</u></b>	<b><u>\$ 874,902</u></b>	<b><u>\$ 2,227,777</u></b>
<b><u>LIABILITIES AND NET ASSETS</u></b>				
<b><u>LIABILITIES</u></b>				
<b>Current Liabilities</b>				
Agency funds payable - Note 4	\$ 513,046			\$ 513,046
Accounts and accrued expenses payable	83,405			83,405
Grants payable	551,680			551,680
Security deposits payable	<u>2,100</u>			<u>2,100</u>
<b>Total Current Liabilities</b>	<b><u>1,150,231</u></b>			<b><u>1,150,231</u></b>
Commitments - Note 3				
<b>NET ASSETS</b>				
Unrestricted - operating	47,810			47,810
Unrestricted - Board designated reserve	12,564			12,564
Temporarily restricted - Note 6		142,270		142,270
Permanently restricted			<u>\$ 874,902</u>	<u>874,902</u>
<b>Total Net Assets</b>	<b><u>60,374</u></b>	<b><u>142,270</u></b>	<b><u>874,902</u></b>	<b><u>1,077,546</u></b>
<b>Total Liabilities and Net Assets</b>	<b><u>\$ 1,210,605</u></b>	<b><u>\$ 142,270</u></b>	<b><u>\$ 874,902</u></b>	<b><u>\$ 2,227,777</u></b>

See accompanying notes to financial statements.

**THE ASTRAEA FOUNDATION, INC.**  
**STATEMENT OF ACTIVITIES**  
**FOR THE YEAR ENDED JUNE 30, 2000**

	<u>Unrestricted</u>	<u>Temporarily Restricted</u>	<u>Permanently Restricted</u>	<u>All Funds</u>
<b><u>Support and Revenue</u></b>				
Individual contributions	\$ 364,483	\$ 395,809	\$ 33,133	\$ 793,425
Foundation contributions - Note 7	93,500	144,030	65,543	303,073
Corporate contributions	37,831			37,831
Federation contributions	501			501
Bequest	7,881			7,881
In-kind contributions	387			387
Special events	114,936			114,936
Administrative fees	32,047			32,047
Interest and dividend income	57,585	9,161		66,746
Net realized gains on investment transactions	59,387	30,375		89,762
Net unrealized gains on investment transactions	( 7,929)	( 18,224)		( 26,153)
Miscellaneous income	<u>12,305</u>	<u>          </u>	<u>          </u>	<u>12,305</u>
<b>Total Support and Revenue</b>	<b>772,914</b>	<b>561,151</b>	<b>98,676</b>	<b>1,432,741</b>
Net Assets released from restriction - Note 5				
Satisfaction of program restrictions	<u>548,290</u>	<u>( 548,290)</u>	<u>-</u>	<u>-</u>
<b>Total Support and Revenue</b>	<b><u>1,321,204</u></b>	<b><u>12,861</u></b>	<b><u>98,676</u></b>	<b><u>1,432,741</u></b>
<b><u>Expenses</u></b>				
<b>Program Services</b>				
Program services	<u>1,068,652</u>			<u>1,068,652</u>
<b>Supporting Services</b>				
Administrative and General	85,842			85,842
Fund Raising	<u>131,061</u>			<u>131,061</u>
<b>Total Supporting Services</b>	<b><u>219,903</u></b>			<b><u>219,903</u></b>
<b>Total Expenses</b>	<b><u>1,285,555</u></b>			<b><u>1,285,555</u></b>
<b>Changes in Net Assets</b>	<b>35,649</b>	<b>12,861</b>	<b>98,676</b>	<b>147,186</b>
Net Assets as of June 30, 1999	<u>24,725</u>	<u>129,409</u>	<u>776,226</u>	<u>930,360</u>
Net Assets as of June 30, 2000	<u>\$ 60,374</u>	<u>\$ 142,270</u>	<u>\$ 874,902</u>	<u>\$ 1,077,546</u>

See accompanying notes to financial statements.

**THE ASTRAEA FOUNDATION, INC.**  
**STATEMENT OF CASH FLOWS**  
**FOR THE YEAR ENDED JUNE 30, 2000**

**Cash Flows from Operating Activities**

Change in Net Assets \$ 147,186

**Adjustments to reconcile change in Net Assets  
to net cash provided by operating activities:**

Depreciation and amortization	10,477
Increase in accounts receivable	( 554)
Increase in prepaid expenses	( 9,365)
Increase in accounts and accrued expenses payable	18,798
Decrease in pledges, grants and contributions receivable	53,069
Increase in grants payable	208,230
Increase in agency funds payable	134,365
Decrease in deferred revenue	( 2,379)
Net realized gains on investment transactions	( 89,762)
Net unrealized gain on investment transactions	<u>26,153</u>

**Total Adjustments** 349,032

**Net Cash Provided by Operating Activities** 496,218

**Cash Flows from Investing Activities**

Purchases of investments	( 702,196)
Proceeds from sales of investments	435,828
Acquisition of fixed assets	<u>( 25,929)</u>

**Net Cash Used in Investing Activities** ( 292,297)

**Net Increase in Cash** 203,921

Cash balance as of June 30, 1999 340,118

Cash balance as of June 30, 2000 \$ 544,039

See accompanying notes to financial statements.

**THE ASTRAEA FOUNDATION, INC.**  
**STATEMENT OF FUNCTIONAL EXPENSES**  
**FOR THE YEAR ENDED JUNE 30, 2000**

	Program Services	Supporting Services		Total Program and Supporting Services
		Administrative And General	Fund Raising	
Salaries	\$ 220,391	\$ 44,078	\$ 50,375	\$ 314,844
Payroll taxes and employee benefits	65,196	13,039	14,902	93,137
<b>Total payroll and related expenses</b>	<b>285,587</b>	<b>57,117</b>	<b>65,277</b>	<b>407,981</b>
Grant expenses	576,825			576,825
Event expenses	20,702	737	15,182	36,621
Mailing	18,590		18,590	37,180
Printing and design	35,071	3,313	6,140	44,524
Publicity and advertising	1,030		300	1,330
Travel, meetings and conferences	16,272		6,610	22,882
Consultants	12,615	2,509		15,124
Professional fees	23,169	4,965	4,965	33,099
Supplies	2,922	468	507	3,897
Equipment rental	7,390	1,182	1,281	9,853
Dues, fees and subscriptions	909	145	157	1,211
Insurance	1,486	238	258	1,982
Telephone and telecommunications	11,454	1,833	1,985	15,272
Postage and messenger services	15,111	1,625	1,761	18,497
Occupancy	29,413	4,706	5,098	39,217
Repairs and maintenance	1,455	233	252	1,940
Business related expenses	756	1,701	1,336	3,793
Board and staff development		1,065		1,065
Miscellaneous	37	2,748		2,785
<b>Total expenses before depreciation and amortization</b>	<b>1,060,794</b>	<b>84,585</b>	<b>129,699</b>	<b>1,275,078</b>
Depreciation and amortization	7,858	1,257	1,362	10,477
<b>Total expenses</b>	<b>\$ 1,068,652</b>	<b>\$ 85,842</b>	<b>\$ 131,061</b>	<b>\$ 1,285,555</b>

See accompanying notes to financial statements.

**THE ASTRAEA FOUNDATION, INC.**  
**NOTES TO FINANCIAL STATEMENTS**  
**JUNE 30, 2000**

The Astraea Foundation, Inc. ("Astraea") is the first nationwide lesbian foundation. Astraea was started in 1977 by multi-racial, multi-cultural group of feminist activists to empower all women and girls through financial and organizational support.

Astraea is exempt under Section 501(c)(3) of the Internal Revenue Code and similar provisions of the State Code.

**NOTE 1 SUMMARY OF SIGNIFICANT ACCOUNTING POLICIES**

- a) The accompanying financial statements have been prepared on the accrual basis of accounting.
- b) Major acquisitions of fixed assets are capitalized and depreciated utilizing the straight line method over their estimated useful lives. Leasehold improvements are capitalized and amortized over the term of the lease or their estimated useful lives whichever is shorter.
- c) All contributions are considered to be available for unrestricted use unless specifically restricted by the donor. Contributions received and unconditional promises to give are measured at their fair value and are reported as an increase in net assets. Astraea reports gifts of cash and other assets as restricted support if they are received with donor stipulations that limit the use of the donated assets, or if they are designated as support for future periods. When a donor restriction expires, that is, when a stipulated time restriction ends or purpose restriction is accomplished, temporarily restricted net assets are transferred to unrestricted net assets and reported in the statement of activities as net assets released from restrictions.
- d) Contributed securities are recorded at market value at the date of receipt.
- e) Donated goods and services that are susceptible to objective measurement or valuation are recorded as support and expenses at fair value.
- f) Investments in equity securities with readily determinable fair values and all investments in debt securities are measured at fair value in the statement of financial position. Investment income or loss (including gains and losses on investments, interest, and dividends) is included in the statement of activities as increases or decreases in unrestricted net assets unless income or loss is restricted by donor or law.
- g) The preparation of financial statements in conformity with generally accepted accounting principles requires management to make estimates and assumptions that affect the reported amounts of assets and liabilities and disclosure of contingent assets and liabilities at the date of the financial statements and the reported amounts of revenues and expenses during the reporting period. Actual results could differ from those estimates.

**THE ASTRAEA FOUNDATION, INC.  
NOTES TO FINANCIAL STATEMENTS  
JUNE 30, 2000**

**NOTE 2 INVESTMENTS**

Investments, stated at fair values, at June 30, 2000 are as follows:

Investments - current	\$ 631,070
Investments - non-current	<u>743,304</u>
Total	<u>\$1,374,374</u>

Investments are composed of the following:

Mutual funds	\$ 53,156
Equity securities	602,175
Corporate debt securities	217,847
U.S. Government obligations	<u>501,196</u>
Total	<u>\$1,374,374</u>

**NOTE 3 COMMITMENTS**

Astraea and The Sister Fund, Inc. jointly lease their premises under an operating lease expiring on February 28, 2005. The future minimum lease payments, exclusive of certain escalation costs, are as follows:

<u>Year Ending June 30</u>	
2001	\$ 85,239
2002	87,796
2003	90,430
2004	93,143
2005	<u>63,325</u>
	<u>\$ 419,933</u>

Astraea pays fifty percent of the monthly rent expenses.

---

MEMBERS  
AMERICAN INSTITUTE OF CERTIFIED PUBLIC ACCOUNTANTS  
NEW YORK STATE SOCIETY OF CERTIFIED PUBLIC ACCOUNTANTS

**INDEPENDENT AUDITORS' REPORT ON SUPPLEMENTARY INFORMATION**

To the Board of Directors  
The Astraea Foundation, Inc.  
New York, New York

The financial statements of The Astraea Foundation, Inc., namely, the statement of financial position as of June 30, 2000, and the related statements of activities, changes in net assets, cash flows and functional expenses for the year then ended and our independent Auditors' Report thereon, are included in the preceding section of this report.

Our audit was conducted for the purpose of forming an opinion on the basic financial statements taken as a whole. The information included in the accompanying pages 11 and 12 is presented for purposes of additional analysis and is not a required part of the basic financial statements. Such information has been subjected to the auditing procedures applied in the audit of the basic financial statements and, in our opinion, is fairly stated in all material respects in relation to the basic financial statements taken as a whole.

*Winnie Tam & Co., P.C.*

New York, New York  
October 5, 2000



**THE ASTRAEA FOUNDATION, INC.  
STATEMENT OF ACTIVITIES OF AFFILIATE PROJECT  
WORKING GROUP FOR LESBIAN AND GAY ISSUES  
FOR THE YEAR ENDED JUNE 30, 2000**

<b><u>Support and Revenue</u></b>	
Contributions and grants	\$ 135,000
Memberships	33,475
Merchandise sales	1,565
Interest income	<u>187</u>
<b>Total Support and Revenue</b>	<b><u>170,227</u></b>
<b><u>Expenses</u></b>	
Administrative fees	3,347
Bank charges	101
Conferences and meetings	457
Consultants	1,302
Dues and subscriptions	525
Salaries and fringes	68,659
Postage and delivery	4,091
Printing and reproduction	4,585
Rent	4,980
Supplies	478
Telephone	3,368
Travel	<u>7,170</u>
<b>Total Expenses</b>	<b><u>99,063</u></b>
<b>Change in Net Assets</b>	<b>71,164</b>
Net Assets as of June 30, 1999	<u>45,628</u>
Net Assets as of June 30, 2000	<b><u>\$ 116,792</u></b>

**THE ASTRAEA FOUNDATION, INC.  
STATEMENT OF ACTIVITIES OF AFFILIATE PROJECT  
NATIONAL PARTNERSHIP  
FOR THE YEAR ENDED JUNE 30, 2000**

<b><u>Support and Revenue</u></b>	
Contributions and grants	<u>\$ 628,000</u>
 <b>Total Support and Revenue</b>	 <u>628,000</u>
 <b><u>Expenses</u></b>	
Administrative fees	12,560
Grants	415,000
Salaries and fringes	44,259
Postage and delivery	1,410
Printing and stationery	1,067
Equipment and furnishings	2,009
Rent	4,980
Supplies	2,604
Telephone	1,714
Travel	5,951
Conferences	395
Consultants	72,748
Other	<u>102</u>
 <b>Total Expenses</b>	 <u>564,799</u>
 Change in net assets	 63,201
 Net Assets as of June 30, 1999	 <u>333,053</u>
 Net Assets as of June 30, 2000	 <u>\$ 396,254</u>

**THE ASTRAEA FOUNDATION, INC.**  
**INDEPENDENT AUDITORS' REPORT**  
**ON**  
**FINANCIAL STATEMENTS**  
**AS OF JUNE 30, 2001**  
**AND**  
**FOR THE YEAR THEN ENDED**

---

MEMBERS  
AMERICAN INSTITUTE OF CERTIFIED PUBLIC ACCOUNTANTS  
NEW YORK STATE SOCIETY OF CERTIFIED PUBLIC ACCOUNTANTS

**INDEPENDENT AUDITORS' REPORT**

To the Board of Directors  
The Astraea Foundation, Inc.  
New York, New York

We have audited the accompanying statement of financial position of The Astraea Foundation, Inc. as of June 30, 2001 and the related statements of activities, cash flows and functional expenses for the year then ended. These financial statements are the responsibility of The Astraea Foundation, Inc.'s management. Our responsibility is to express an opinion on these financial statements based on our audit.

We conducted our audit in accordance with generally accepted auditing standards. Those standards require that we plan and perform the audit to obtain reasonable assurance about whether the financial statements are free of material misstatement. An audit includes examining, on a test basis, evidence supporting the amounts and disclosures in the financial statements. An audit also includes assessing the accounting principles used and significant estimates made by management, as well as evaluating the overall financial statement presentation. We believe that our audit provides a reasonable basis for our opinion.

In our opinion, the financial statements referred to above present fairly, in all material respects, the financial position of The Astraea Foundation, Inc. as of June 30, 2001 and the changes in its net assets and its cash flows for the year then ended in conformity with generally accepted accounting principles.

*Winnie Tam & Co., P.C.*

New York, New York  
October 12, 2001

**THE ASTRAEA FOUNDATION, INC.**  
**STATEMENT OF FINANCIAL POSITION**  
**AS OF JUNE 30, 2001**

	<u>Unrestricted</u>	<u>Temporarily Restricted</u>	<u>Permanently Restricted</u>	<u>All Funds</u>
<b><u>ASSETS</u></b>				
<b>Current Assets</b>				
Cash	\$ 14,399	\$ 743,651	\$ 469,985	\$ 1,228,035
Accounts receivable	19,928			19,928
Pledges, grants and contributions receivable	216,950	208,570	601,981	1,027,501
Short term investments - Note 2	13,551	122,378		135,929
Prepaid expenses	3,981			3,981
Due from unrestricted fund		<u>37,083</u>		<u>**</u>
<b>Total Current Assets</b>	<u>268,809</u>	<u>1,111,682</u>	<u>1,071,966</u>	<u>2,415,374</u>
<b>Non Current Assets</b>				
Fixed assets, at cost, net of accumulated depreciation and amortization of \$86,514 - Note 1	46,095			46,095
Security deposits	6,000			6,000
Long-term investments - Note 2			<u>939,416</u>	<u>939,416</u>
<b>Total Assets</b>	<u>\$ 320,904</u>	<u>\$ 1,111,682</u>	<u>\$ 2,011,382</u>	<u>\$ 3,406,885</u>
 <b><u>LIABILITIES AND NET ASSETS</u></b>				
<b><u>LIABILITIES</u></b>				
<b>Current Liabilities</b>				
Agency funds payable - Note 4	\$ 96,275			\$ 96,275
Accounts and accrued expenses payable	68,900			68,900
Grants payable	11,500	136,851		148,351
Security deposits payable	1,743			1,743
Due to temporarily restricted fund	<u>37,083</u>			<u>**</u>
<b>Total Current Liabilities</b>	<u>215,501</u>	<u>136,851</u>		<u>315,269</u>
Commitments - Note 3				
<b><u>NET ASSETS</u></b>				
Unrestricted - operating	91,852			91,852
Unrestricted - Board designated reserve	13,551			13,551
Temporarily restricted - Note 6		974,831		974,831
Permanently restricted			<u>\$ 2,011,382</u>	<u>2,011,382</u>
<b>Total Net Assets</b>	<u>105,403</u>	<u>974,831</u>	<u>2,011,382</u>	<u>3,091,616</u>
<b>Total Liabilities and Net Assets</b>	<u>\$ 320,904</u>	<u>\$ 1,111,682</u>	<u>\$ 2,011,382</u>	<u>\$ 3,406,885</u>

\*\* Interfunds are eliminated in total column.

See accompanying notes to financial statements.

**THE ASTRAEA FOUNDATION, INC.**  
**STATEMENT OF ACTIVITIES**  
**FOR THE YEAR ENDED JUNE 30, 2001**

	<u>Unrestricted</u>	<u>Temporarily Restricted</u>	<u>Permanently Restricted</u>	<u>All Funds</u>
<b><u>Support and Revenue</u></b>				
Individual contributions	\$ 397,996	\$ 1,091,150	\$ 1,077,480	\$ 2,566,626
Foundation contributions - Note 7	201,251	302,705	50,000	553,956
Corporate contributions	29,507	1,000	9,000	39,507
Federation contributions	218			218
Bequest	10,000			10,000
Government contract		504,889		504,889
Special events	174,742			174,742
Administrative fees	72,125			72,125
Interest and dividend income	81,414	8,782		90,196
Net realized gains on investment transactions	19,921	4,062		23,983
Net unrealized loss on investment transactions	( 24,265)	( 37,349)		( 61,614)
Miscellaneous income	<u>12,280</u>			<u>12,280</u>
<b>Total Support and Revenue</b>	<b>975,189</b>	<b>1,875,239</b>	<b>1,136,480</b>	<b>3,986,908</b>
Net Assets released from restriction - Note 5				
Satisfaction of program restrictions	<u>1,042,678</u>	<u>( 1,042,678)</u>	-	-
<b>Total Support and Revenue</b>	<b><u>2,017,867</u></b>	<b><u>832,561</u></b>	<b><u>1,136,480</u></b>	<b><u>3,986,908</u></b>
<b><u>Expenses</u></b>				
<b>Program Services</b>				
Program services	<u>1,749,899</u>			<u>1,749,899</u>
<b>Supporting Services</b>				
Administrative and General	63,954			63,954
Fund Raising	<u>158,985</u>			<u>158,985</u>
<b>Total Supporting Services</b>	<u>222,939</u>			<u>222,939</u>
<b>Total Expenses</b>	<u>1,972,838</u>			<u>1,972,838</u>
<b>Changes in Net Assets</b>	45,029	832,561	1,136,480	2,014,070
Net Assets as of June 30, 2000	<u>60,374</u>	<u>142,270</u>	<u>874,902</u>	<u>1,077,546</u>
Net Assets as of June 30, 2001	<u>\$ 105,403</u>	<u>\$ 974,831</u>	<u>\$ 2,011,382</u>	<u>\$ 3,091,616</u>

See accompanying notes to financial statements.

**THE ASTRAEA FOUNDATION, INC.  
STATEMENT OF CASH FLOWS  
FOR THE YEAR ENDED JUNE 30, 2001**

**Cash Flows from Operating Activities**

Change in Net Assets \$ 2,014,070

**Adjustments to reconcile change in Net Assets  
to net cash provided by operating activities:**

Depreciation and amortization	15,693
Increase in accounts receivable	( 19,130)
Decrease in prepaid expenses	10,597
Decrease in accounts and accrued expenses payable	( 14,505)
Increase in pledges, grants and contributions receivable	( 775,991)
Decrease in grants payable	( 403,329)
Decrease in agency funds payable	( 416,771)
Decrease in security deposits payable	( 357)
Net realized gains on investment transactions	( 23,983)
Net unrealized loss on investment transactions	<u>61,614</u>

**Total Adjustments** ( 1,566,162)

**Net Cash Provided by Operating Activities** 447,908

**Cash Flows from Investing Activities**

Purchases of investments	( 1,018,456)
Proceeds from sales of investments	1,279,854
Acquisition of fixed assets	<u>( 25,310)</u>

**Net Cash Provided by Investing Activities** 236,088

**Net Increase in Cash** 683,996

Cash balance as of June 30, 2000 544,039

Cash balance as of June 30, 2001 \$ 1,228,035

See accompanying notes to financial statements.

**THE ASTRAEA FOUNDATION, INC.**  
**STATEMENT OF FUNCTIONAL EXPENSES**  
**FOR THE YEAR ENDED JUNE 30, 2001**

	Supporting Services			Total Program and Supporting Services
	Program Services	Administrative And General	Fund Raising	
Salaries	\$ 304,817	\$ 19,921	\$ 42,347	\$ 367,085
Payroll taxes and employee benefits	85,315	5,576	11,852	102,743
<b>Total payroll and related expenses</b>	<b>390,132</b>	<b>25,497</b>	<b>54,199</b>	<b>469,828</b>
Grant expenses	1,006,019			1,006,019
Event expenses	88,838	898	26,558	116,294
Mailing	7,160		6,659	13,819
Merchandise	2,242		2,242	4,484
Printing and design	57,048	3,208	8,561	68,817
Publicity and advertising	1,183		1,932	3,115
Travel, meetings and conferences	16,946	303	6,987	24,236
Consultants	33,539	15,745	31,650	80,934
Professional fees	36,838	2,407	5,118	44,363
Supplies	6,214	406	863	7,483
Equipment rental	10,740	702	1,492	12,934
Dues, fees and subscriptions	1,055	69	146	1,270
Insurance	2,195	143	305	2,643
Telephone and telecommunications	15,969	1,025	2,244	19,238
Postage and mailing	20,796	904	1,921	23,621
Occupancy	39,478	2,580	5,485	47,543
Business related expenses	476	982	813	2,271
Board and staff development		166		166
Miscellaneous		8,067		8,067
<b>Total expenses before depreciation and amortization</b>	<b>1,736,868</b>	<b>63,102</b>	<b>157,175</b>	<b>1,957,145</b>
Depreciation and amortization	13,031	852	1,810	15,693
<b>Total expenses</b>	<b>\$ 1,749,899</b>	<b>\$ 63,954</b>	<b>\$ 158,985</b>	<b>\$ 1,972,838</b>

See accompanying notes to financial statements.



**THE ASTRAEA FOUNDATION, INC.**  
**NOTES TO FINANCIAL STATEMENTS**  
**JUNE 30, 2001**

The Astraea Foundation, Inc. ("Astraea") is the first nationwide lesbian foundation. Astraea was started in 1977 by multi-racial, multi-cultural group of feminist activists to empower all women and girls through financial and organizational support.

Astraea is exempt under Section 501(c)(3) of the Internal Revenue Code and similar provisions of the State Code.

**NOTE 1 SUMMARY OF SIGNIFICANT ACCOUNTING POLICIES**

- a) The accompanying financial statements have been prepared on the accrual basis of accounting.
- b) Major acquisitions of fixed assets are capitalized and depreciated utilizing the straight line method over their estimated useful lives. Leasehold improvements are capitalized and amortized over the term of the lease or their estimated useful lives whichever is shorter.
- c) All contributions are considered to be available for unrestricted use unless specifically restricted by the donor. Contributions received and unconditional promises to give are measured at their fair value and are reported as an increase in net assets. Astraea reports gifts of cash and other assets as restricted support if they are received with donor stipulations that limit the use of the donated assets, or if they are designated as support for future periods. When a donor restriction expires, that is, when a stipulated time restriction ends or purpose restriction is accomplished, temporarily restricted net assets are transferred to unrestricted net assets and reported in the statement of activities as net assets released from restrictions.
- d) Contributed securities are recorded at market value at the date of receipt.
- e) Donated goods and services that are susceptible to objective measurement or valuation are recorded as support and expenses at fair value.
- f) Investments in equity securities with readily determinable fair values and all investments in debt securities are measured at fair value in the statement of financial position. Investment income or loss (including gains and losses on investments, interest, and dividends) is included in the statement of activities as increases or decreases in unrestricted net assets unless income or loss is restricted by donor or law.
- g) The preparation of financial statements in conformity with generally accepted accounting principles requires management to make estimates and assumptions that affect the reported amounts of assets and liabilities and disclosure of contingent assets and liabilities at the date of the financial statements and the reported amounts of revenues and expenses during the reporting period. Actual results could differ from those estimates.

**THE ASTRAEA FOUNDATION, INC.**  
**NOTES TO FINANCIAL STATEMENTS**  
**JUNE 30, 2001**

**NOTE 2 INVESTMENTS**

Investments, stated at fair values, at June 30, 2001 are as follows:

Investments - current	\$ 135,929
Investments - non-current	<u>939,416</u>
Total	<u>\$1,075,345</u>

Investments are composed of the following:

Mutual funds	\$ 62,842
Equity securities	711,892
Corporate debt securities	77,021
U.S. Government obligations	<u>223,590</u>
Total	<u>\$1,075,345</u>

**NOTE 3 COMMITMENTS**

Astraea and The Sister Fund, Inc. jointly lease their premises under an operating lease expiring on February 28, 2005. The future minimum lease payments, exclusive of certain escalation costs, are as follows:

<u>Year Ending June 30</u>	
2002	\$ 87,796
2003	90,430
2004	93,143
2005	<u>63,325</u>
	<u>\$ 334,694</u>

Astraea pays fifty percent of the monthly rent expenses.

**THE ASTRAEA FOUNDATION, INC.  
NOTES TO FINANCIAL STATEMENTS  
JUNE 30, 2001**

**NOTE 4 AGENCY FUNDS PAYABLE**

Astraea receives contributions on behalf of three affiliated projects for which it acts as a fiscal sponsor. As of June 30, 2001, the unexpended funds for the Marriage Project of \$96,275 is reflected in the statement of financial position as Agency fund payable.

In January 2001, Funders for Gay and Lesbian Issues, Inc., a not-for-profit organization, was established to conduct the Working Group for Lesbian and Gay Issues and National Partnership projects. The remaining funds of these two projects were distributed to the new organization during the year.

**NOTE 5 NET ASSETS RELEASED FROM RESTRICTIONS**

The amounts released from restriction during the year ended June 30, 2001 are as follows:

Satisfaction of program restrictions

Grants and Grantmaking expenses	\$ 953,795
Endowment Campaign operations	53,883
Technology upgrade	12,000
New program officer	<u>23,000</u>
Total	<u>\$1,042,678</u>

**NOTE 6 TEMPORARILY RESTRICTED NET ASSETS**

Temporarily restricted net assets as of June 30, 2001 are available for the following purposes:

Grants and Grantmaking expenses	\$ 771,261
Endowment Campaign operations	58,570
General support designated for future periods	<u>145,000</u>
	<u>\$ 974,831</u>

**NOTE 7 FOUNDATION CONTRIBUTIONS**

Included in the foundation contributions for the year are donor advised grants distributed through foundations of \$135,251.

THE ASTRAEA FOUNDATION, INC.  
NOTES TO FINANCIAL STATEMENTS  
JUNE 30, 2001

**NOTE 8 FUNCTIONAL ALLOCATION OF EXPENSES**

The costs of providing Astraea's services have been summarized on a functional basis in the statement of functional expenses. Accordingly, certain costs have been allocated among the program and supporting services benefitted.

**NOTE 9 PENSION**

Astraea sponsors a simplified employee pension plan that covers employees who have completed one year of service. Contribution to the plan is based on ten percent of employees' salaries. Pension expenses for the year was \$26,951.

**Pink Triangle**  
**Coalition Proposal**  
**Appendix 4**

**THE ASTRAEA FOUNDATION, INC.**  
**INDEPENDENT AUDITORS' REPORT**  
**ON**  
**FINANCIAL STATEMENTS**  
**AS OF JUNE 30, 2002**  
**AND**  
**FOR THE YEAR THEN ENDED**

THE ASTRAEA FOUNDATION, INC.

- CONTENTS -

	<u>Page</u>
Independent Auditors' Report	1
Statement of Financial Position as of June 30, 2002	2
Statement of Activities for the year ended June 30, 2002	3
Statement of Cash Flows for the year ended June 30, 2002	4
Statement of Functional Expenses for the year ended June 30, 2002	5
Notes to Financial Statements	6-9
Independent Auditors' Report on Supplemental Information	10
Statement of Activities of Affiliate Project - Marriage Project for the year ended June 30, 2002	11

---

MEMBERS  
AMERICAN INSTITUTE OF CERTIFIED PUBLIC ACCOUNTANTS  
NEW YORK STATE SOCIETY OF CERTIFIED PUBLIC ACCOUNTANTS

**INDEPENDENT AUDITORS' REPORT**

To the Board of Directors  
The Astraea Foundation, Inc.  
New York, New York

We have audited the accompanying statement of financial position of The Astraea Foundation, Inc. as of June 30, 2002 and the related statements of activities, cash flows and functional expenses for the year then ended. These financial statements are the responsibility of The Astraea Foundation, Inc.'s management. Our responsibility is to express an opinion on these financial statements based on our audit.

We conducted our audit in accordance with auditing standards generally accepted in the United States of America. Those standards require that we plan and perform the audit to obtain reasonable assurance about whether the financial statements are free of material misstatement. An audit includes examining, on a test basis, evidence supporting the amounts and disclosures in the financial statements. An audit also includes assessing the accounting principles used and significant estimates made by management, as well as evaluating the overall financial statement presentation. We believe that our audit provides a reasonable basis for our opinion.

In our opinion, the financial statements referred to above present fairly, in all material respects, the financial position of The Astraea Foundation, Inc. as of June 30, 2002 and the changes in its net assets and its cash flows for the year then ended in conformity with accounting principles generally accepted in the United States of America.

*Vinnie Tam & Co., P.C.*

New York, New York  
September 11, 2002

**THE ASTRAEA FOUNDATION, INC.**  
**STATEMENT OF FINANCIAL POSITION**  
**AS OF JUNE 30, 2002**

	<u>Unrestricted</u>	<u>Temporarily Restricted</u>	<u>Permanently Restricted</u>	<u>All Funds</u>
<b><u>ASSETS</u></b>				
<b>Current Assets</b>				
Cash	\$ 77,404	\$ 72,997	\$ 450,132	\$ 600,533
Accounts receivable	11,513			11,513
Agency fund receivable - Note 4	3,294			3,294
Pledges, grants and contributions receivable	30,232	241,432	533,602	805,266
Short term investments - Note 2	13,434	625,452		638,886
Prepaid expenses	3,790			3,790
Due from other funds			<u>336,120</u>	<u>**</u>
<b>Total Current Assets</b>	<u>139,667</u>	<u>939,881</u>	<u>1,319,854</u>	<u>2,063,282</u>
<b>Non Current Assets</b>				
Fixed assets, at cost, net of accumulated depreciation and amortization of \$106,259 - Note 1	48,000			48,000
Security deposits	6,000			6,000
Long-term investments - Note 2			<u>1,325,706</u>	<u>1,325,706</u>
<b>Total Assets</b>	<u>\$ 193,667</u>	<u>\$ 939,881</u>	<u>\$ 2,645,560</u>	<u>\$ 3,442,988</u>
<b><u>LIABILITIES AND NET ASSETS</u></b>				
<b><u>LIABILITIES</u></b>				
<b>Current Liabilities</b>				
Accounts and accrued expenses payable	\$ 59,918			59,918
Grants payable	53,000	\$ 187,800		240,800
Security deposits payable	2,745			2,745
Due to other funds	<u>329,418</u>	<u>6,702</u>		<u>**</u>
<b>Total Current Liabilities</b>	<u>445,081</u>	<u>194,502</u>		<u>303,463</u>
Commitments - Note 3				
<b><u>NET ASSETS</u></b>				
Unrestricted - Operating	( 264,848)			( 264,848)
Unrestricted - Board designated reserve	13,434			13,434
Temporarily restricted - Note 6		745,379		745,379
Permanently restricted			<u>\$ 2,645,560</u>	<u>2,645,560</u>
<b>Total Net Assets</b>	<u>( 251,414)</u>	<u>745,379</u>	<u>2,645,560</u>	<u>3,139,525</u>
<b>Total Liabilities and Net Assets</b>	<u>\$ 193,667</u>	<u>\$ 939,881</u>	<u>\$ 2,645,560</u>	<u>\$ 3,442,988</u>

\*\* Interfunds are eliminated in total column.

See accompanying notes to financial statements.



**THE ASTRAEA FOUNDATION, INC.**  
**STATEMENT OF ACTIVITIES**  
**FOR THE YEAR ENDED JUNE 30, 2002**

	<u>Unrestricted</u>	<u>Temporarily Restricted</u>	<u>Permanently Restricted</u>	<u>All Funds</u>
<b><u>Support and Revenue</u></b>				
Individual contributions	\$ 351,617	\$ 456,585	\$ 584,155	\$ 1,392,357
Foundation contributions - Note 7	120,550	393,792	34,250	548,592
Corporate contributions	34,024	1,000	9,000	44,024
Special events	72,188			72,188
Administrative fees	29,333			29,333
Rental income	9,960			9,960
Interest and dividend income	82,692	14,797		97,489
Net realized loss on investment transactions	( 72,585)	( 45,223)		( 117,808)
Net unrealized loss on investment transactions	( 211,715)	( 82,565)		( 294,280)
Miscellaneous income	<u>27,182</u>			<u>27,182</u>
<b>Total Support and Revenue</b>	<b>443,246</b>	<b>738,386</b>	<b>627,405</b>	<b>1,809,037</b>
Net Assets released from restriction - Note 5				
Satisfaction of program restrictions	<u>961,065</u>	( <u>967,838</u> )	<u>6,773</u>	<u>-</u>
<b>Total Support and Revenue</b>	<b><u>1,404,311</u></b>	<b>( <u>229,452</u>)</b>	<b><u>634,178</u></b>	<b><u>1,809,037</u></b>
<b><u>Expenses</u></b>				
<b>Program Services</b>				
Program Services	<u>1,458,162</u>			<u>1,458,162</u>
<b>Supporting Services</b>				
Administrative and General	136,198			136,198
Fund Raising	<u>166,768</u>			<u>166,768</u>
<b>Total Supporting Services</b>	<u>302,966</u>			<u>302,966</u>
<b>Total Expenses</b>	<u>1,761,128</u>			<u>1,761,128</u>
<b>Changes in Net Assets</b>	<b>( 356,817)</b>	<b>( 229,452)</b>	<b>634,178</b>	<b>47,909</b>
Net Assets as of June 30, 2001	<u>105,403</u>	<u>974,831</u>	<u>2,011,382</u>	<u>3,091,616</u>
Net Assets as of June 30, 2002	<u>(\$ 251,414)</u>	<u>\$ 745,379</u>	<u>\$ 2,645,560</u>	<u>\$ 3,139,525</u>

See accompanying notes to financial statements.

**THE ASTRAEA FOUNDATION, INC.  
STATEMENT OF CASH FLOWS  
FOR THE YEAR ENDED JUNE 30, 2002**

**Cash Flows from Operating Activities**

Change in Net Assets \$ 47,909

**Adjustments to reconcile change in Net Assets  
to net cash provided by operating activities:**

Depreciation and amortization	19,745
Decrease in accounts receivable	8,415
Decrease in prepaid expenses	191
Increase in agency fund receivable	( 3,294)
Decrease in accounts and accrued expenses payable	( 8,982)
Decrease in pledges, grants and contributions receivable	222,235
Increase in grants payable	92,449
Decrease in agency funds payable	( 96,275)
Increase in security deposits payable	1,002
Net realized loss on investment transactions	117,808
Net unrealized loss on investment transactions	<u>294,280</u>

**Total Adjustments** 647,574

**Net Cash Provided by Operating Activities** 695,483

**Cash Flows from Investing Activities**

Purchases of investments	( 2,153,913)
Proceeds from sales of investments	852,578
Acquisition of fixed assets	<u>( 21,650)</u>

**Net Cash Used in Investing Activities** ( 1,322,985)

**Net Decrease in Cash** ( 627,502)

Cash balance as of June 30, 2001 1,228,035

Cash balance as of June 30, 2002 \$ 600,533

See accompanying notes to financial statements.

**THE ASTRAEA FOUNDATION, INC.**  
**STATEMENT OF FUNCTIONAL EXPENSES**  
**FOR THE YEAR ENDED JUNE 30, 2002**

	Supporting Services			Total Program and Supporting Services
	Program Services	Administrative And General	Fund Raising	
Salaries	\$ 403,855	\$ 62,151	\$ 74,176	\$ 540,182
Payroll taxes and employee benefits	101,196	15,580	18,585	135,361
<b>Total Payroll and related expenses</b>	<b>505,051</b>	<b>77,731</b>	<b>92,761</b>	<b>675,543</b>
Grant expenses	717,380			717,380
Event expenses	7,803		16,697	24,500
Mailing	5,586	1,156	2,453	9,195
Printing and design	39,264		14,719	53,983
Publicity and advertising			3,175	3,175
Travel, meetings and conferences	36,105	846	15,109	52,060
Consultants	18,432	21,092		39,524
Professional fees	20,951	1,262	3,029	25,242
Supplies	74	13,846	1,273	15,193
Equipment rental	11,227	676	1,623	13,526
Dues, fees and subscriptions	2,668	161	386	3,215
Insurance	2,646	159	382	3,187
Telephone and telecommunications	17,089	889	2,218	20,196
Postage and mailing	8,764	7,348	2,664	18,776
Occupancy	42,368	2,552	6,126	51,046
Repair and maintenance	4,835	291	699	5,825
Program expenses	1,458	1,738	673	3,869
Board and staff development		1,617		1,617
Miscellaneous	72	3,847	412	4,331
<b>Total Expenses before depreciation and amortization</b>	<b>1,441,773</b>	<b>135,211</b>	<b>164,399</b>	<b>1,741,383</b>
Depreciation and amortization	16,389	987	2,369	19,745
<b>Total Expenses</b>	<b>\$ 1,458,162</b>	<b>\$ 136,198</b>	<b>\$ 166,768</b>	<b>\$ 1,761,128</b>

See accompanying notes to financial statements.

**THE ASTRAEA FOUNDATION, INC.**  
**NOTES TO FINANCIAL STATEMENTS**  
**JUNE 30, 2002**

The Astraea Foundation, Inc. ("Astraea") is the first nationwide lesbian foundation. Astraea was started in 1977 by multi-racial, multi-cultural group of feminist activists to empower all women and girls through financial and organizational support.

Astraea is exempt under Section 501(c)(3) of the Internal Revenue Code and similar provisions of the State Code.

**NOTE 1 SUMMARY OF SIGNIFICANT ACCOUNTING POLICIES**

- a) The accompanying financial statements have been prepared on the accrual basis of accounting.
- b) Major acquisitions of fixed assets are capitalized and depreciated utilizing the straight line method over their estimated useful lives. Leasehold improvements are capitalized and amortized over the term of the lease or their estimated useful lives whichever is shorter.
- c) All contributions are considered to be available for unrestricted use unless specifically restricted by the donor. Contributions received and unconditional promises to give are measured at their fair value and are reported as an increase in net assets. Astraea reports gifts of cash and other assets as restricted support if they are received with donor stipulations that limit the use of the donated assets, or if they are designated as support for future periods. When a donor restriction expires, that is, when a stipulated time restriction ends or purpose restriction is accomplished, temporarily restricted net assets are transferred to unrestricted net assets and reported in the statement of activities as net assets released from restrictions.
- d) Contributed securities are recorded at market value at the date of receipt.
- e) Donated goods and services that are susceptible to objective measurement or valuation are recorded as support and expenses at fair value.
- f) Investments in equity securities with readily determinable fair values and all investments in debt securities are measured at fair value in the statement of financial position. Investment income or loss (including gains and losses on investments, interest, and dividends) is included in the statement of activities as increases or decreases in unrestricted net assets unless income or loss is restricted by donor or law.
- g) The preparation of financial statements in conformity with generally accepted accounting principles requires management to make estimates and assumptions that affect the reported amounts of assets and liabilities and disclosure of contingent assets and liabilities at the date of the financial statements and the reported amounts of revenues and expenses during the reporting period. Actual results could differ from those estimates.

THE ASTRAEA FOUNDATION, INC.  
 NOTES TO FINANCIAL STATEMENTS  
 JUNE 30, 2002

**NOTE 2 INVESTMENTS**

Investments, stated at fair values, at June 30, 2002 are as follows:

Investments - current	\$ 638,886
Investments - non-current	<u>1,325,706</u>
Total	<u>\$ 1,964,592</u>

Investments are composed of the following:

Mutual funds	\$ 655,677
Equity securities	932,717
Corporate debt securities	191,483
U.S. Government obligations	<u>184,715</u>
Total	<u>\$ 1,964,592</u>

**NOTE 3 COMMITMENTS**

Astraea and The Sister Fund, Inc. jointly lease their premises under an operating lease expiring on February 28, 2005. The future minimum lease payments, exclusive of certain escalation costs, are as follows:

<u>Year Ending June 30</u>	
2003	\$ 90,430
2004	93,143
2005	<u>63,325</u>
	<u>\$ 246,898</u>

Astraea pays fifty percent of the monthly rent expenses.

**THE ASTRAEA FOUNDATION, INC.**  
**NOTES TO FINANCIAL STATEMENTS**  
**JUNE 30, 2002**

**NOTE 4 AGENCY FUND RECEIVABLE**

Astraea receives contributions on behalf of an affiliated project for which it acts as a fiscal sponsor. As of June 30, 2002, the over-expended funds for the Marriage Project of \$3,294 is reflected in the statement of financial position as Agency fund receivable.

**NOTE 5 NET ASSETS RELEASED FROM RESTRICTIONS**

The amounts released from restriction during the year ended June 30, 2002 are as follows:

Satisfaction of program restrictions

Grants and Grantmaking expenses	\$ 721,137
Endowment Campaign operations	49,928
Capacity building	60,000
Funds re-designated for Endowment	<u>6,773</u>

837,838

Satisfaction of time restrictions

General support designated for fiscal year ending June 30, 2002	<u>130,000</u>
--	----------------

Total	<u>\$ 967,838</u>
-------	-------------------

**NOTE 6 TEMPORARILY RESTRICTED NET ASSETS**

Temporarily restricted net assets as of June 30, 2002 are available for the following purposes:

Grants and Grantmaking expenses	\$ 513,947
Endowment Campaign operations	41,432
General support designated for future periods	<u>190,000</u>

\$ 745,379

**NOTE 7 FOUNDATION CONTRIBUTIONS**

Included in the foundation contributions for the year are donor advised grants distributed through foundations of \$83,500.

THE ASTRAEA FOUNDATION, INC.  
NOTES TO FINANCIAL STATEMENTS  
JUNE 30, 2002

**NOTE 8 FUNCTIONAL ALLOCATION OF EXPENSES**

The costs of providing Astraea's services have been summarized on a functional basis in the statement of functional expenses. Accordingly, certain costs have been allocated among the program and supporting services benefitted.

**NOTE 9 PENSION**

Astraea sponsors a simplified employee pension plan that covers employees who have completed one year of service. Contribution to the plan is based on ten percent of employees' salaries. Pension expenses for the year was \$35,885.

---

MEMBERS  
AMERICAN INSTITUTE OF CERTIFIED PUBLIC ACCOUNTANTS  
NEW YORK STATE SOCIETY OF CERTIFIED PUBLIC ACCOUNTANTS

**INDEPENDENT AUDITORS' REPORT ON SUPPLEMENTARY INFORMATION**

To the Board of Directors  
The Astraea Foundation, Inc.  
New York, New York

The financial statements of The Astraea Foundation, Inc., namely, the statement of financial position as of June 30, 2002, and the related statements of activities, changes in net assets, cash flows and functional expenses for the year then ended and our independent Auditors' Report thereon, are included in the preceding section of this report.

Our audit was conducted for the purpose of forming an opinion on the basic financial statements taken as a whole. The information included in the accompanying page 11 is presented for purposes of additional analysis and is not a required part of the basic financial statements. Such information has been subjected to the auditing procedures applied in the audit of the basic financial statements and, in our opinion, is fairly stated in all material respects in relation to the basic financial statements taken as a whole.

*Winnie Tam & Co., P.C.*

New York, New York  
September 11, 2002



**THE ASTRAEA FOUNDATION, INC.  
STATEMENT OF ACTIVITIES OF AFFILIATE PROJECT  
MARRIAGE PROJECT  
FOR THE YEAR ENDED JUNE 30, 2002**

**Support and Revenue**

Contributions and grants	\$ <u>137,000</u>
<b>Total Support and Revenue</b>	<u>137,000</u>

**Expenses**

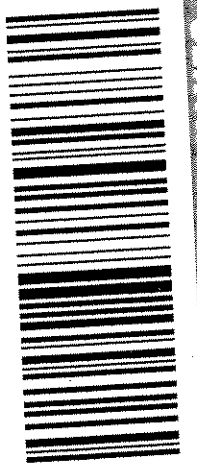
Dues and subscriptions	1,410
Administrative fees	17,152
Salaries and fringes	131,040
Supplies and office expenses	2,140
Telephone and communications	9,213
Travel	14,224
Consultants	33,800
Occupancy	26,400
Printing	218
Insurance	661
Postage and mailing	175
Equipment rental and repairs	54
Bank charges	<u>82</u>
<b>Total Expenses</b>	<u>236,569</u>

**Changes in Net Assets** ( 99,569)

Net Assets as of June 30, 2001 96,275

Net Assets as of June 30, 2002 (\$ 3,294)

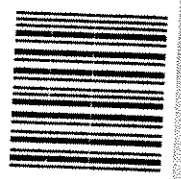
OF THE NATIONAL MAIL SERVICE  
**CERTIFIED MAIL™**



7003 1680 0006 8291 2854



9258



94128

U.S. POSTAGE  
PAID  
NEW YORK, NY  
10005  
DEC 19, 03  
PMOUNT

**\$14.40**  
00037343-4

Lambda Legal Defense & Education Fund National Headquarters  
120 Wall Street, Suite 1500 | New York, NY 10005-3904



**Lambda**  
LEGAL

Special Master Judah Gribetz, Esq.  
Holocaust Victim Assets Litigation  
P.O. Box 8300  
San Francisco, CA 94128-8300

**Swiss Banks**

correspondence

**PRIORITY MAIL**

UNITED STATES POSTAL SERVICE™  
[www.usps.gov](http://www.usps.gov)

LABEL 107R, OCT 1997

UNITED STATES DISTRICT COURT  
EASTERN DISTRICT OF NEW YORK

-----x  
IN RE: HOLOCAUST VICTIMS ASSETS  
LITIGATION

CASE NO. 96CV4849(ERK)(MDG)  
(Consolidated with CV 96-5161 and  
CV 97-461)

-----x  
**Pink Triangle Coalition *Cy Pres* Proposal**  
**Appendix 3**



UNITED STATES DISTRICT COURT  
EASTERN DISTRICT OF NEW YORK

-----X  
IN RE: HOLOCAUST VICTIMS ASSETS  
LITIGATION

CASE NO. 96CV4849(ERK)(MDG)  
(Consolidated with CV 96-5161 and  
CV 97-461)

-----X

**JOINT OBJECTION AND PROPOSAL OF THE PINK  
TRIANGLE COALITION IN RESPONSE TO THE SPECIAL  
MASTER'S OCTOBER 2, 2003 RECOMMENDATION**

UNITED STATES DISTRICT COURT  
EASTERN DISTRICT OF NEW YORK

-----X  
IN RE: HOLOCAUST VICTIMS ASSETS  
LITIGATION

CASE NO. 96CV4849(ERK)(MDG)  
(Consolidated with CV 96-5161 and  
CV 97-461)

-----X

**MEMORANDUM IN SUPPORT OF JOINT OBJECTION AND PROPOSAL  
OF THE PINK TRIANGLE COALITION IN RESPONSE TO THE  
SPECIAL MASTER'S OCTOBER 2, 2003 RECOMMENDATION**

## TABLE OF CONTENTS

I.	Introduction .....	1
II.	The Pink Triangle Coalition Is The Sole International Representative Of The Interests Of Homosexual Victims Of The Third Reich, And Submits This Joint Objection And Proposal On Their Behalf .....	4
III.	The Nazi Persecution Of Homosexuals Was Followed Post-War By Silencing Of These Victims .....	6
A.	Nazi Persecution, Looting And Enslavement Of Homosexuals .....	7
B.	Homosexual Victims Were Excluded From Recognition And Reparation Efforts After The War .....	8
C.	Despite Extensive Outreach Efforts In Recent Years, Few Homosexual Survivors Can Be Found, And The Vast Majority Remain Unknown .....	12
IV.	The Proposed <i>Cy Pres</i> Distribution Appropriately Benefits And Commemorates This Silenced Victim Group .....	14
A.	The Proposed <i>Cy Pres</i> Distribution Will Benefit Known And Unknown Homosexual Class Members .....	15
1.	The Proposal's First Initiative Is To Provide Direct Assistance To The Few Identified Needy Survivors .....	16
2.	The Proposal's Three Additional Initiatives, To Fund Scholarly Research, Educational And Humanitarian Programs To Commemorate Homosexual Victims, Appropriately Benefits Homosexual Members Of The Class .....	18
B.	Information Regarding Astraea, The Recommended Distribution Agency .....	21

V.	Given The Historical Silencing Of Homosexual Holocaust Victims, The Pink Triangle Coalition's <i>Cy Pres</i> Proposal Is Particularly Fitting To Benefit Homosexual Class Members Who Are Unable To Make Direct Claims From The Fund Or Cannot Be Identified . . . . .	24
VI.	Conclusion . . . . .	27

## **I. Introduction**

The Pink Triangle Coalition respectfully submits on behalf of homosexual class members this Joint Objection and Proposal in Response to the Special Master's Interim Report on Distribution and Recommendation for Allocation of Excess and Possible Unclaimed Residual Funds of October 2, 2003 ("Special Master's Recommendation"). The Pink Triangle Coalition is a consortium of ten international lesbian and gay organizations whose mission is to advocate for representation of homosexual victims of the Third Reich within international funds addressing Nazi persecution, and to uncover the legacy of these victims for full inclusion in the historical record. It is the sole international advocacy group for gay and lesbian victims of the Nazis.<sup>1</sup>

The Pink Triangle Coalition supports the principle that some residual unclaimed funds appropriately should be distributed to provide direct assistance to needy victims of the Nazis, as proposed by the Special Master. However, to the extent the Special Master's Recommendation contemplates distribution of all residual unclaimed funds only to identified needy living Holocaust victims, the Pink Triangle Coalition respectfully objects on behalf of homosexual victims of the Third Reich, nearly all of whom are now impossible to identify. Because of ongoing persecution and criminalization of these victims following the fall of the Nazi regime, gay and lesbian survivors of the Holocaust have remained hidden and silenced to this day. For the same reason, until recently there have not been organizations formed to represent their interests in obtaining recognition and reparation for their suffering at the hands of the Nazis. Therefore,

---

<sup>1</sup> See accompanying Affidavit of Julie R. Dorf In Support of Joint Objection and Proposal of the Pink Triangle Coalition, dated December 17, 2003 ("Dorf Aff."), ¶ 2.



allocation of residual unclaimed funds to identified needy Nazi victims only would leave persecuted homosexual members of the class largely unacknowledged and uncompensated. Given that only a dwindling handful of living homosexual survivors of Nazi persecution have been and can be located, the Pink Triangle Coalition proposes a modest distribution of unclaimed residual monies on behalf of homosexual class members consistent with *cypres* principles beyond the limited allocation to identified needy Nazi victims recommended by the Special Master. This proposal does justice to the members of the class who are homosexual and whose losses have thus far gone unrecognized in this class action.

Lead Settlement Class Counsel Burt Neuborne has likewise indicated to this Court his support for *cypres* distributions to organizations serving this victim group more broadly, given the special difficulty of locating significant numbers of gay Holocaust survivors:

I believe that minor deviations from the norm [of direct victim assistance] are appropriate in settings involving certain victims of Nazi persecution, such as disabled or gay victims, where it is impossible to locate and identify significant numbers of Holocaust survivors. In those settings, modest *cypres* distributions to entities serving the particular victim group at large would, in my opinion, be appropriate. . . .

Declaration Of Burt Neuborne In Support Of The Interim Report Of The Special Master, October 13, 2003 (“Neuborne Decl.”), ¶ 50. In addition, settlement class counsel Morris Ratner has expressed his endorsement of the *cypres* proposal.

The Coalition specifically proposes allocation of settlement monies to establish a fund that will advance four initiatives to acknowledge and benefit gay and lesbian members of the class:

- First, to provide material assistance in the form of a modest monthly pension to the few identified needy gay Nazi survivors still living and to any who may yet come forward.

- Second, to support scholarly research into the anti-gay crimes committed by the Nazi regime aimed at locating additional survivors of the persecution and documenting their experiences.
- Third, to promote the education of students and the general public about the Nazi persecution of gay people.
- Fourth, to advance efforts to prevent anti-gay persecution throughout the world today by supporting educational, outreach, and humanitarian programs, in order to prevent repetition of the horrors of the Nazi regime.

With participation of the Pink Triangle Coalition, the proposed fund will be administered by the Astraea Lesbian Foundation for Justice (“Astraea,” formerly known as the Astraea Lesbian Action Foundation), an established foundation with a long track record in distributing funds internationally to benefit needy gay and lesbian communities and educational, outreach and humanitarian programs. The Coalition respectfully requests a *cy pres* allocation of one percent, with interest, of the common funds in this litigation, an appropriate yet modest share to commemorate the suffering of homosexual class members who were victimized by the Nazis.

Accompanying this memorandum is the Pink Triangle Coalition’s Proposal For A Cy Pres Allocation For Homosexual Victims Of The Nazis (“Proposal”), which describes in detail the existing record of the Nazi’s anti-gay persecution as well as the post-war history of a virtual erasure of gay men and lesbians from the record of Nazi-era crimes. The Proposal and its Appendices provide a full account of the work of the Pink Triangle Coalition, the bases for the Coalition’s proposal and objection to the Special Master’s Recommendation, and added detail on the anticipated uses and management of any *cy*

*pres* funds distributed through this suit. This memorandum gives a summary overview of the information in the Proposal and Appendices and explains that the proposed uses of the funds are proper based on the legal doctrine surrounding the *cypres* remedy. Also submitted in support of this Joint Objection and Proposal are the affidavits of Julie Dorf, a founding member of the Pink Triangle Coalition and coordinator of its efforts to ensure proper representation of gay and lesbian targets of Nazi persecution in this class action, and of expert historian Professor James Steakley (“Steakley Aff.”).

A prior version of the attached Proposal was submitted to the Special Master on January 7, 2002, together with a motion formally requesting a *cypres* distribution from the settlement proceeds of this suit. On March 5, 2002, that motion was denied without prejudice to renew at a later date when the Court would consider all proposals for distribution of residual funds. By this submission, the Pink Triangle Coalition renews and updates its Proposal, and lodges its objection to the Special Master’s Recommendation to the extent it would insufficiently acknowledge or would defer the compelling interests of the many unidentified gay and lesbian victims of Nazi persecution whose voices over the decades have been silenced.

## **II. The Pink Triangle Coalition Is The Sole International Representative Of The Interests Of Homosexual Victims Of The Third Reich, And Submits This Joint Objection And Proposal On Their Behalf**

The Pink Triangle Coalition is the sole international consortium dedicated to advocating for gay and lesbian victims of the Nazis, and it has successfully distributed funds from other relief efforts in the past. The Coalition has a dual mission: to ensure representation of gay and lesbian victims of the Third Reich within international funds addressing Nazi persecution, and to collect and disseminate information about the

Nazi's targeting of gay men and lesbians, with an aim of involving more organizations in documenting the crimes and commemorating the victims. The following organizations, all of whom have experience working on Nazi compensation issues or with relationship to compensation funds, are its members:

Aguda (Association of Gay Men, Lesbians, Bisexuals, and Transgendered in Israel), Tel Aviv  
European Region of the International Lesbian & Gay Association (ILGA-Europe)  
Homosexuelle Initiative (HOSI-Wien), Vienna  
International Association of Gay and Lesbian Children of Holocaust Survivors, US  
International Gay and Lesbian Human Rights Commission (IGLHRC), San Francisco  
Lesben- und Schwulenverband Deutschland (LSVD), Berlin  
Magnus Hirschfeld Gesellschaft, Berlin  
Mémorial de la Déportation Homosexuelle, Paris  
Pink Cross, Switzerland  
World Congress of Gay, Lesbian, Bisexual, and Transgender Jews (WCGLBTJ)<sup>2</sup>

As described in the attached Proposal, Appendix 1 and Dorf Affidavit, representatives of the Pink Triangle Coalition have been active in numerous international efforts aimed at locating gay and lesbian Nazi victims, securing restitution for them, and increasing scholarly understanding of Nazi crimes against humanity.<sup>3</sup> They have been a coalition for over five years in order to assist the few identified elderly gay survivors still living, some of whom continue to remain anonymous, and to attempt to represent the memories of those who remain unidentified or who have perished. Despite years of efforts by the Coalition and others working with it, very few living gay victims of the Third Reich can be identified. This is sadly

---

<sup>2</sup> See Appendix 1 to the Proposal for more detailed information about the member organizations; Proposal at 6; Dorf Aff., ¶¶ 8-13. The Coalition also has two at-large members, its coordinator, Julie Dorf, and Dr. Klaus Muller of the United States Holocaust Memorial Museum, Washington, D.C.. In addition, the Coalition has a category of Survivor Member Beneficiary, for known gay and lesbian survivors of Nazi persecution, persecuted as such, whose interests the Coalition advances. *Id.*

<sup>3</sup> See Proposal at 6 - 8.

unsurprising given the persecution of these victims, the obliteration of their political and social organizations by the Nazis, the subsequent silencing of gay and lesbian survivors in the post-war era, and the absence of direct heirs to advocate on behalf of these victims.

### **III. The Nazi Persecution Of Homosexuals Was Followed Post-War By Silencing Of These Victims**

The Nazi regime in Germany (1933-1945) targeted gay men and lesbians for a range of severely repressive measures designed to eradicate expressions of homosexuality and to promote reproduction of the so-called Aryan race. The Nazis pillaged the gay and lesbian community throughout Germany and the annexed territories by systematically seizing businesses, banning publications, crushing political and social organizations, dissolving scholarly and scientific institutions, and looting assets from all these enterprises. Ultimately, the Nazis deported thousands of gay men to concentration camps, where they were exploited as slave laborers and subjected to extreme physical abuse which resulted in many instances in death. In some concentration camps, the Nazis also singled out gay men for gruesome medical experiments.<sup>4</sup>

The exact scope of this persecution remains unknown because of the substantial obstacles facing historians in reconstructing the accounts of people who were forced to remain silent about their experiences for decades afterwards, living under continued state repression and social opprobrium. As a result, the great majority of gay men and lesbians who were targeted by the Nazis and survived have not been located and will probably never be found or accounted for.<sup>5</sup> A *cypres* allocation to organizations more broadly benefitting this class is therefore required to acknowledge the distinct circumstances of gay and lesbian

---

<sup>4</sup> See Proposal at 9 - 11, 16 - 25.

<sup>5</sup> See Proposal at 26 - 39; *Steakley Aff.*.

victims of the Nazis and to do justice to these class members.

**A. Nazi Persecution, Looting And Enslavement Of Homosexuals**

One goal of the Nazi regime was to suppress all private same-sex sexual activity and all public expression of gay and lesbian culture and community in Germany and the annexed territories. The persecution was far more extreme in its range and severity than that experienced by gay men and lesbians in the pre- and post-Nazi periods in Germany or in other Western European countries.

The facts known about the targeting of gay men and lesbians under the Third Reich reveal a pattern of effective and merciless repression. The Nazi regime's campaign to eradicate homosexuality began in 1933 with the deliberate destruction of research centers, cultural resources, businesses, communications media, and social organizations that formed the backbone of the gay community throughout Germany.<sup>6</sup> Historians have estimated that under the Nazi regime as many as 100,000 homosexuals may have been arrested or tracked on the basis of section 175 of the Reich Penal Code, which outlawed not only sexual activity but even touching, "looking," and hugging between men, and of section 179 of the Austrian Penal Code, which criminalized both male and female same-sex intimacy.<sup>7</sup>

As many as 15,000 gay men were deported as such to concentration camps and compelled to perform slave labor for corporations or for entities owned or controlled by the Nazi regime.<sup>8</sup> A small number of lesbian women also were deported to camps specifically because of their sexual orientation, and

---

<sup>6</sup> See Proposal at 16 - 18.

<sup>7</sup> See Proposal at 11, 14.

<sup>8</sup> See Proposal at 21 - 25, detailing what is known of the policies at specific concentration camps.

some were forced into prostitution in camp brothels.<sup>9</sup> Those interned for their homosexuality were among the most abused in the camps, which abuse, for some, included subjection to heinous medical experimentation, including forcible castration. As many as 9,000 men interned as gay were killed in the camps.<sup>10</sup>

In addition to persecuting individuals, the Nazi regime plundered gay community organizations, meeting places, and centers of political and scholarly activity, and destroyed or stole their assets.<sup>11</sup> Members were arrested, enslaved, tortured and murdered.<sup>12</sup> The Nazis laundered a significant portion of their illegal gains through Swiss banks, likely connecting the spoils with the assets involved in this suit. It is also reasonable to surmise that gay men and lesbians transferred funds to Swiss banks in an attempt to protect them but, like members of other groups targeted for persecution by the Nazis, did not survive to claim them after the war.

**B. Homosexual Victims Were Excluded From Recognition And Reparation Efforts After The War**

In the years following the war, the Nazi's persecution of gay men and lesbians was largely erased from the historical record. Not until the 1980's, nearly a half century after the crimes occurred, was the persecution of gay men and lesbians by the Nazis even publicly acknowledged by the German

---

<sup>9</sup> See Proposal at 19.

<sup>10</sup> See Proposal at 10 - 11.

<sup>11</sup> See Proposal at 16 - 18.

<sup>12</sup> *Id.*

government.<sup>13</sup> Those victimized because of their homosexuality were excluded from many reparations programs, and until the past ten to fifteen years, little effort went into locating gay and lesbian survivors or documenting their experiences.<sup>14</sup> Gay men and lesbians continued to be criminalized and stigmatized in the decades following the war, and attempts to organize and seek reparations were met with reprisal. Scholars have only begun to investigate systematically the anti-gay policies and practices of the Third Reich and to uncover stories of its victims. For this reason, the historical record remains incomplete. As the Special Master has noted, “[c]ompensation to the Roma, Jehovah’s Witness, disabled, and homosexual victims of the Nazis generally has been more limited in scope and beset by difficulties, including continuing prejudice and mischaracterization of the victims.” In Re: Holocaust Victim Assets Litigation, Special Master’s Proposed Plan of Allocation and Distribution of Settlement Proceeds at 139 n. 383 (E.D.N.Y. Sept. 11, 2000).

Until 1969, West German law criminalized sex between men under the same Nazi version of section 175 of the penal code that was in effect during the Third Reich.<sup>15</sup> Between 1949 and 1969, nearly 50,000 men were convicted under this law.<sup>16</sup> Although the East German government repealed section 175 in 1950, it replaced it with the original 1871 German law against sexual intimacy between men.<sup>17</sup> Thus, for decades after the fall of the Third Reich, identifying oneself as a survivor of Nazi persecution on the

---

<sup>13</sup> See Proposal at 29.

<sup>14</sup> See Proposal at 29 - 31, 37 - 38.

<sup>15</sup> See Proposal at 27.

<sup>25</sup> See Proposal at 36.

<sup>17</sup> *Id.*



basis of homosexuality continued to entail enormous risks to a survivor's personal security and liberty.

In addition to this major impediment, all gay and lesbian victims of the Nazis continued to suffer under a social atmosphere of prejudice and intolerance toward homosexuality. Many homosexual survivors did not speak about their experiences in the decades following the war – unable to share them even with close family and friends.<sup>18</sup> The enforced invisibility resulted in a climate today where few family or friends of gay survivors even exist who could come forward to tell their stories on their behalf. Among those who did tell family and friends of their experiences, many may never have explained the actual reason for their persecution; for others, the family may have amended the historical record on its own as it was passed down through later generations. Gay men who survived were also among the least likely to go on to have children to whom they could or would tell their stories, who could come forward now to identify their families' losses.

Gay and lesbian victims were not only discouraged from coming forward by the threat of criminal sanctions and social stigma, they were also largely excluded from eligibility for the reparations and compensation programs that became available throughout the post-war years. Despite many reparations programs undertaken internationally from the 1950's through the 1990's – totaling over \$425 billion – only 22 self-identified gay victims recovered any compensation from the German government. Only two recovered from the Austrian government, after a special fund was established for needy so-called 'forgotten' victims in 1995. Austria's general compensation legislation still does not provide recompense to survivors persecuted for being gay, and those who had submitted applications under the prior

---

<sup>18</sup> See Proposal at 26 - 27, 32.

compensation schemes had been turned down.<sup>19</sup> The erasure of the Nazis' persecution of gay and lesbian people meant that the efforts and resources put into identifying surviving victims among other identified target groups were never spent in the gay community to locate survivors and to connect them with the larger community of survivors.

Finally, the Nazis destroyed what had been a vibrant and thriving gay and lesbian culture in the major urban centers of Germany, and the regeneration of this culture was thwarted by continuing anti-homosexual public policy and social attitudes after the fall of the Nazi regime. For decades after World War II, therefore, gay and lesbian survivors lacked the community networks and cultural institutions that might otherwise have been available to reach out to survivors and make efforts in their behalf. Gay and lesbian communities in parts of the world not directly affected by Nazi persecution were not as developed as the community destroyed by the Nazis. They were not in a position to advocate for gay and lesbian survivors in the decades following World War II, both because they lacked resources and because they too were left unaware of the extent of Nazi crimes against members of the gay and lesbian community. Because there was no organized attempt to identify or reach out to gay survivors after the war, and no community able to offer support and assistance, the kinds of community-based networks active today in distributing assistance to needy victims in other communities do not exist for gay survivors. For all of these reasons, homosexual class members are uniquely unlikely to be able to make individual claims from the fund.<sup>20</sup>

---

<sup>19</sup> See Proposal at 29.

<sup>20</sup> See Proposal at 26 - 35; Steakley Aff.; Dorf Aff., ¶¶ 9 - 15.

**C. Despite Extensive Outreach Efforts In Recent Years, Few Homosexual Survivors Can Be Found, And The Vast Majority Remain Unknown**

Extensive efforts have been and continue to be made to locate members of the five classes here who were persecuted for their homosexuality, and to provide them with restitution through the settlement. Member organizations of and advisors to the Pink Triangle Coalition have been actively involved in scholarly research and public outreach efforts for more than fifteen years to find and assist such victims throughout the world. Among these efforts are pioneering studies authored by historian Klaus Muller of the United States Holocaust Memorial Museum, and the work of Pink Cross and Hosi Wien aimed at locating gay and lesbian survivors and representing their interests. The Mémorial de la Déportation Homosexuelle, Hosi Wien, and Dr. Klaus Muller all have worked directly with the International Organization for Migration (“IOM”) in its search for gay and lesbian survivors who could receive direct support under the current litigation.<sup>21</sup> Despite these years of efforts, however, the Pink Triangle Coalition has identified only seven living needy surviving gay men who were victims of Nazi persecution. More information about these needy survivors is provided in Appendix 2 to the Proposal and summarized in Point IV.A.1. below.

Recent research efforts reinforce the conclusion that additional gay survivors are extraordinarily difficult to locate. A study completed in 2001 attempted to find named individuals in the city of Berlin who were prosecuted under section 175 of the Penal Code during the Nazi era. The ages of the 553 men named who were persecuted under section 175 ranged from 16 to 35 at the time of persecution; today these men would be in their mid-70's into their 90's. Out of these 553 men, 38 were sent to a

---

<sup>21</sup> See Proposal at 33 - 34; Dorf Aff., ¶¶ 12 - 14.

concentration camp for periods ranging from some months to several years. The study found only three for whom hints existed that they may have survived into the post-war period. Despite significant efforts to trace them, no one could be found who is still alive. That study was commissioned by the Magnus-Hirschfeld Gesellschaft, through funds secured by the Pink Triangle Coalition.<sup>22</sup>

Likewise, the IOM continues to undertake significant efforts to locate survivors in all of the non-Jewish communities, with the backing of funds from this litigation. In 1999, the IOM published full-page advertisements, in which gay survivors were expressly mentioned, in newspapers around the globe as well as in specialized magazines. The Special Master's Recommendation includes a summary of other efforts by the IOM to locate gay and lesbian survivors, which have had very limited success.<sup>23</sup> The Pink Triangle Coalition has also worked with staff of the Bundesverband Information und Beratung für NS-Verfolgte (the Federation for Information and Support for the Survivors of NS-Persecution), and has located three additional survivors through that effort. Still, only a handful of living gay survivors are known to the Coalition. Just in the past several years, since the Coalition's initial Proposal was filed in the proceeding, the number of living identified survivors has dwindled with the deaths of three more of these victims, one of whom died in the past several months, leaving only a handful of elderly identified survivors alive at this time.<sup>24</sup>

Until recently, gay survivors were effectively erased from historical memory. Certainly, vast obstacles inhere in locating any of the individual class members after more than fifty years have passed and

---

<sup>22</sup> See Proposal at 34.

<sup>23</sup> See Special Master's Recommendation at 105 n. 147; Dorf Aff., ¶ 11.

<sup>24</sup> See Dorf Aff., ¶¶ 12-14.

millions of records have been destroyed. But gay men and lesbians faced the additional burden of persistent stigma and state repression that kept them silent for decades after the war, while other victims came forward to tell their stories and demand restitution. Homosexual survivors would now be in their mid-seventies or older; given their advanced age, most are extremely unlikely now to give up the prudent strategy of public invisibility that helped them survive the anti-gay climate of the post-war era. They are thus uniquely difficult, if not impossible, to identify today.

#### **IV. The Proposed *Cy Pres* Distribution Appropriately Benefits And Commemorates This Silenced Victim Group**

Use of the residual funds in this litigation exclusively for the aid of identified, needy survivors would do little to provide relief to the broader population of those persecuted because they were gay. The lasting harm wrought by the Third Reich's deliberate persecution and murder of gay people – and the complicity of the defendant Swiss Banks in that event – thus merits reparation through additional tools.

These are the precise circumstances which call for application of *cy pres* principles to assist and commemorate unrecognized homosexual members of the class. As Lead Settlement Class Counsel Burt Neuborne has also represented, “modest cy pres distributions to entities serving the particular victim group at large” are appropriate “in settings involving certain victims of Nazi persecution, such as disabled or gay victims, where it is impossible to locate and identify significant numbers of Holocaust survivors.” Neuborne Decl., October 13, 2003, at ¶ 50.

A *cy pres* distribution out of the unclaimed, residual funds that represents one percent of the settlement in this litigation is a fitting remembrance for the benefit of gay and lesbian victims of the Nazis. It will serve both those who have endured to tell their stories, and those who did not survive or who due

to fear of continuing social prejudice, advanced age or other reasons, have been unable to come forward and claim recompense for themselves. It also will serve as an important acknowledgment of Nazi persecution of gay people, an aspect of the history of the Nazi regime which has remained shamefully hidden until only recently.

**A. The Proposed *Cy Pres* Distribution Will Benefit Known And Unknown Homosexual Class Members**

Though the gay and lesbian community lost in total numbers far fewer than other communities, in the years since World War II it has suffered a secondary consequence of Nazi persecution by being erased from the historical record and excluded from government compensation efforts. The Pink Triangle Coalition recognizes that distributions to individual class members are continuing and does not seek any monies that would reduce the amounts available to those claimants. The Special Master's call for proposals assumes that funds will remain unclaimed after that process, however. An allocation out of those residual funds of one percent of the total settlement is fair and reasonable in light of the destruction of gay and lesbian community life in Nazi Germany; the enslavement, torture and murder of thousands of gay individuals; and the compulsory silencing of victims in post-war Germany, Austria, and elsewhere.

The funds requested will be used both to assist the remaining survivors and to increase public understanding and awareness of Nazi persecution of gay and lesbian victims. They will be administered by an established international foundation, Astraea, with a long track record of funding programs around the globe to benefit needy gay and lesbian communities. The funds will be specifically used to support four major initiatives:

1. Providing pensions to identified surviving needy victims of Nazi persecution, and to those who may still come forward.
2. Supporting scholarly research to understand more fully the anti-gay crimes of the Third Reich, and to locate additional survivors and document their experiences.
3. Promoting efforts to commemorate those who were persecuted and to increase awareness of Nazi crimes aimed at gay men and lesbians. These efforts may include curriculum development, public memorials, and educational programs.
4. Advancing the work of humanitarian organizations aimed at ending state-sponsored discrimination and persecution against gay men and lesbians throughout the world. The object of this effort is to prevent the horrors of the Nazi regime from ever recurring.<sup>25</sup>

Additional information about each of these initiatives is provided below and in the accompanying Proposal and Appendices.

- 1. The Proposal's First Initiative Is To Provide Direct Assistance To The Few Identified Needy Survivors**

Extensive efforts to locate remaining gay survivors of Nazi persecution have yielded a total of seven needy survivors who remain alive and are willing to come forward. Much of the specific demographic information about target groups to be served, requested by the Special Master in his call for Proposals, is therefore inapposite to a proposal seeking to address the absence of gay victims from existing relief efforts and their erasure from the historical record, and, indeed, the Pink Triangle Coalition objects on this basis to the Special Master's Recommendation and seeks application of *cypres* principles to allocate funds to

---

<sup>25</sup> See Proposal at 36.

otherwise commemorate and benefit the thousands of unknown victims. With respect to the few known surviving needy gay victims, the Pink Triangle Coalition summarizes responses to the Special Master's specific inquiries below. We respectfully refer the Special Master and the Court to Appendix 2 to the attached Proposal for more detailed relevant information about each of these individuals.

Among the seven identified needy surviving Nazi victims, five reside in Germany, and the others in Austria and France. They range in age from their late 70's into their late 90's. All were interned and tortured under the Nazi regime, including, for one, castration. At least a number of them were required to perform forced labor. None have received reparations for their victimization, though in recent years four received through the efforts of Coalition member Pink Cross one-time humanitarian assistance from the Swiss Fund. In addition, these four each received through advocacy by the Coalition assistance out of the U.S. contribution to the International Nazi Persecutees' Relief Fund. This assistance was administered by Astraea and distributed through the Pink Cross.<sup>26</sup> At least most of these elderly victims are in ill-health and depend on public assistance for their support. In particular, some are in special need of additional assistance for medical treatment and medication.

The first priority use of the proposed distribution will be to extend direct material assistance to these known survivors. More specifically, the Pink Triangle Coalition proposes under this first initiative to endow a fund, to be administered by Astraea, that will obtain through a financial intermediary a continuing monthly pension for each of these identified needy gay survivors, and for any who may still come forward. These pension funds will be deposited directly into these survivors' bank accounts, for daily living expenses.

---

<sup>26</sup> See Proposal at 7 - 8; Appendix 2; Dorf Aff., ¶ 8.



The pension payments should materially ease the financial need of these elderly men as they live out the remainder of their years.

**2. The Proposal's Three Additional Initiatives, To Fund Scholarly Research, Educational And Humanitarian Programs To Commemorate Homosexual Victims, Appropriately Benefits Homosexual Members Of The Class**

The amount of direct assistance that can be provided to the handful of identified homosexual Nazi victims is vastly insufficient to provide justice to these class members as a whole. Therefore, the Pink Triangle Coalition proposes an allocation from the distribution to fund ongoing outreach, historical, scholarly and educational programs, as described below and in the attached Proposal. In order to reach class members who cannot come forward, and to commemorate those who have died, the distribution will support efforts aimed at benefitting absent class members as the "next best" alternative. *See, e.g., Democratic Central Comm. of the Dist. of Columbia v. Washington Metro. Area Transit Comm'n*, 84 F.3d 451, 455 (D.C. Cir. 1996) (Settlement funds may "be distributed to the 'next best' class when the plaintiffs cannot be compensated individually. The object of applying the funds to the 'next best' class is to parallel the intended use of the funds as nearly as possible by maximizing the number of plaintiffs compensated.").

Specifically, the Pink Triangle Coalition proposes in its second initiative to support scholarly research that may help identify additional surviving victims, who could then be benefitted under the first initiative, and document their experiences. This research will also promote a growing understanding of the Third Reich's anti-gay crimes, and will help fill in the vast gaps in knowledge about this aspect of the regime's ideology, policy and practices. Through this research, scholars and others will learn more about the Nazis' repression of gay men and lesbians and about the individuals who were its targets; their stories and suffering will not be forgotten. This initiative will use a competitive grant program for academic

research overseen by a committee of qualified scholars.<sup>27</sup>

Under its third initiative, funds will be used to support greater educational efforts among students and the public about Nazi persecution of gay men and lesbians.<sup>28</sup> Educational materials and memorials are sorely lacking in the information they provide about the Nazis' anti-gay terror. To date, only five concentration camps display memorials to the gay and lesbian victims, and museums have only begun to research and present exhibitions about the complex history of this persecution. Moreover, as a national survey of school boards in this country conducted by the United States Holocaust Memorial Museum in Washington, D.C. concluded, no appropriate curriculum exists pertaining to the persecution of gay men and women in the Third Reich. Educational materials and exhibitions will draw on the scholarly research supported by the funds. This initiative will also use a competitive grant program, overseen by an allocations committee composed of individuals familiar with such educational programs, particularly in Europe.<sup>29</sup> Public education to highlight the anti-gay policies of the Nazis will inure to the direct benefit of class members by ensuring that their persecution and their deaths are not forgotten, despite a silence that has lasted more than fifty years. Significant lessons must be learned not only from the Nazis' crimes against gay men and lesbians, but also from the cloak of invisibility that has hidden this aspect of history. Teaching those lessons to future generations will honor the memories of all members of the class who suffered persecution because they were gay or lesbian, and most especially those who cannot now come forward.

Finally, under the fourth initiative, funds will be allocated to finance educational, outreach and

---

<sup>27</sup> See Proposal at 36- 38.

<sup>28</sup> *Id.*

<sup>29</sup> See Proposal at 36 - 39.

awareness programs aimed at preventing persecution and repression of lesbian and gay people around the world, and to support international humanitarian efforts to end continued prejudice. See Jones v. Nat'l Distillers, et al., 56 F. Supp. 2d 355, 358 (S.D.N.Y. 1999) ("A frequent use of class funds not accruing to the class members is a donation to a public or otherwise non-profit entity combating harms similar to those that injured the class members."). Significantly, these funds will go to programs aimed at preventing the kind of anti-gay atrocities of the Nazi regime from again befalling gay individuals and communities elsewhere in the world. Grants under this initiative will be disbursed via Astraea's International Fund for Sexual Minorities, described in the next section and the Astraea materials in Appendix 4.<sup>30</sup> The need to defend and advance the common humanity and human rights of gay men and women did not end with the fall of the Nazi regime. For example, to this day, homosexual acts are a capital offense in several nations, which have carried out executions of gay people under these laws.<sup>31</sup>

The Third Reich destroyed vital cultural institutions; halted research, inquiry and debate about sexual orientation; and crushed a nascent emancipatory movement that had taken hold in Germany starting at the end of the nineteenth century. Not only did individual gay and lesbian victims lose their personal assets, but the community as a whole was robbed of newly developing cultural resources that could never be replaced. Unlike ethnic and religious communities, gay and lesbian people are not brought together from their infancy through family ties; rather, they must make individual efforts to build communities as young people and adults. The Nazi regime stripped gay and lesbian people in Germany and the annexed territories of that capacity to communicate and build networks of meeting places and centers of activity.

---

<sup>30</sup> See Proposal at 36 - 39.

<sup>31</sup> See Proposal at 38 - 39.

Recreating these basic foundations of community has been an ongoing effort for decades. By contributing to current gay and lesbian institutions fighting ongoing homophobia internationally, funds from the settlement will help rebuild what was lost and provide voice to those around the world who continue to be silenced.<sup>32</sup>

**B. Information Regarding Astraea, The Recommended Distribution Agency**

The Pink Triangle Coalition proposes to continue its successful partnership with Astraea to administer a distribution of settlement funds. The funds will be managed by this well-respected, existing foundation with experience and expertise in overseeing grants to non-profits and to individuals around the globe carrying out funded projects.<sup>33</sup>

Astraea is a United States-based public charity founded in 1977 that has emerged as one of the most recognized foundations worldwide dedicated to raising and distributing funds to support research, educational and humanitarian programs to benefit gay and lesbian communities and to fight homophobia world-wide. In 2000, Astraea partnered with the Pink Triangle Coalition to serve as the Coalition's fiscal sponsor.

Astraea has a proven track record in supporting successful projects specifically aimed at raising awareness of Nazi persecution of gay men and lesbians. It recently distributed grants from the \$528,000 award to the Pink Triangle Coalition from the United States State Department's International Nazi Persecutee Relief Fund. Those funds went to support a CD-ROM and book project documenting the

---

<sup>32</sup> Once a distribution of settlement funds is awarded in a specific amount to fund the Pink Triangle Proposal, the Coalition will determine more specifically the allocation of funds among its four initiatives and the length of time these initiatives will run, and could then provide additional specific information to the Special Master and the Court.

<sup>33</sup> See Proposal at 7 - 8 and Appendix 4 for programmatic and financial material regarding Astraea.

Nazi destruction of the Berlin-based Institute for Sexual Sciences, a vital resource for gay and lesbian liberatory efforts in Germany from 1919 to 1933; to distribute an award-winning documentary called Paragraph 175, featuring interviews with gay and lesbian survivors of Nazi persecution;<sup>34</sup> and to underwrite an exhibition in Berlin on underground gay life in that city during the Nazi regime.<sup>35</sup>

Astraea also has decades of experience overseeing the distribution of charitable funds to support research, educational, and human rights work to benefit more broadly gay and lesbian individuals around the globe. Astraea's programs include an International Fund for Sexual Minorities, which is dedicated to funding gay and lesbian human rights and community building efforts world-wide. This Fund gives priority to groups with the least access to traditional funding, and has provided grants to gay and lesbian support organizations in countries from Romania and Croatia to Nicaragua and Mexico, and from Korea and Indonesia to Zimbabwe and Namibia.<sup>36</sup>

In addition to its Board of Directors and staff, Astraea relies on U.S. and International Grants Panels and an International Grants Advisory Board, composed of individuals with expertise in the different regional and substantive areas funded by Astraea.<sup>37</sup> The foundation's administrative expenses in connection with administering the funds are estimated in the 8 - 15% range.<sup>38</sup> Its latest financial and

---

<sup>34</sup> A DVD version of Paragraph 175 is submitted to the Special Master as Appendix 3 to the Proposal.

<sup>35</sup> See Proposal at 7 - 8.

<sup>36</sup> See Appendix 4.

<sup>37</sup> See Proposal at 7; Appendix 4.

<sup>38</sup> See Proposal at 36.

programmatic reports are attached at Appendix 4 to the Proposal. An allocation from the settlement funds would be administered for defined purposes by this established, reputable foundation. It would have an ongoing duty to report periodically to the Court and/or Special Master, which in turn could intervene should it be deemed appropriate.

The attached Proposal contains more detailed discussion of anticipated uses for the funds in the four initiative areas, including possible subjects of further scholarly research, plans to increase visibility of persecuted gays and lesbians in existing memorials based on future research, and efforts to continue outreach to surviving victims.<sup>39</sup> The funds will be administered by this established foundation with a substantial record of service, charged to carry out four specific initiatives within its area of expertise. The foundation will make regular periodic reports to the Special Master and/or the Court, and will be subject to ongoing oversight in its administration of the funds.<sup>40</sup> The proposed management and uses of the requested funds are sufficiently specific and ensure that the allocation will reliably be spent on “class assistance programs that are consistent with the nature of the underlying action and with the judicial function.” In re: “Agent Orange”, 818 F.2d 179, 186 (2d Cir. 1987). *See also* In re Mexico Money Transfer Litigation, 164 F. Supp. 2d 1002, 1031 (N.D. Ill. 2000) (in action challenging money transfer services to Mexico, *cypres* award granted to fund charitable and public interest projects serving Mexican and Mexican-American communities, administered through an independent board with a substantial record of service and charged with responsibility for reviewing funding requests).

---

<sup>39</sup> *See* Proposal at 36 - 38.

<sup>40</sup> The Pink Triangle Coalition would of course be amenable to providing additional detail at the request of the Special Master or the Court or to considering any modifications to its Proposal that the Special Master or the Court may deem appropriate.

**V. Given The Historical Silencing Of Homosexual Nazi Victims, The Pink Triangle Coalition's *Cy Pres* Proposal Is Particularly Fitting To Benefit Homosexual Class Members Who Are Unable To Make Direct Claims From The Fund Or Cannot Be Identified**

The proposed *cypres* distribution of funds is especially appropriate here given that direct monetary distributions to all or even many individual gay and lesbian class members and other victims would be impossible. *Cypres* is an equitable remedy which seeks to achieve the “next best” alternative to direct compensation. The Second Circuit has approved *cypres* remedies in the context of class action settlements, specifically authorizing a district court, “in order to maximize ‘the beneficial impact of the settlement fund on the needs of the class,’ [to] set aside a portion of the settlement proceeds for programs designed to assist the class.” In re: “Agent Orange”, 818 F.2d at 185.

*Cypres* relief is a particularly appropriate way to distribute residual funds after an individual claims process has made direct reparations to individual members of the class. *See, e.g., Powell v. Georgia-Pacific Corp.*, 119 F.3d 703 (8<sup>th</sup> Cir. 1997) (authorizing *cypres* remedy to benefit people outside the class after individual class members paid); In re: “Agent Orange”, 818 F.2d 179 (permitting portion of settlement to be used for programs to assist the class as a whole, in addition to direct individual compensation); Herbert A. Newberg & Alba Conte, 2 Newberg on Class Actions 11.20 (3<sup>rd</sup> ed. 1992) (“In a settlement context, . . . when a balance of the recovery fund remains after individual distribution, the parties, subject to court approval, may agree that undistributed funds will be distributed or disposed of for the indirect benefit of the class.”). *See also Jones v. National Distillers*, 56 F. Supp. 2d 355, 358 (S.D.N.Y. 1999) (“A frequent use of class funds not accruing to the class members is a donation to a public or otherwise non-profit entity combating harms similar to those that injured the class members.”);

In re Three Mile Island Litigation, 557 F. Supp. 96, 97 (M.D. Pa. 1982) (in action based on nuclear reactor accident, \$5 million of \$25 million settlement was “set aside for a Public Health Fund . . . to finance studies of the long term health effects of the . . . incident and to further evacuation planning for the future”).

In this case, the individual claims process has been providing restitution to the members of the class who can be identified and are able to come forward to make claims. The Special Master’s Recommendation further proposes similar direct grants under *cypres* principles to other needy individual Nazi victims who have been identified. But, as discussed above, in the case of gay and lesbian victims, this would likely benefit only a dwindling handful of elderly gay survivors who have been identified and are still living. Though these few individuals certainly deserve recompense, this limited *cypres* remedy, out of a \$1.25 billion fund, hardly begins to do justice to the great majority of gay class members who have been silenced and remain hidden, or who died before their suffering at the hands of the Nazis was acknowledged in post-war relief efforts. *Cypres* contributions to fund programs that serve more broadly communities to which unknown class members may be a part is a particularly fitting remedy where class members “may be reluctant to seek settlement benefits” and may be “impossible to locate.” In re Mexico Money Transfer Litigation, 164 F. Supp. 2d at 1031 (*cypres* funding of charitable and public interest projects serving Mexican communities appropriate where class includes “undocumented persons who may be reluctant to seek settlement benefits” and cannot be found).

Historical research discussed in the Proposal shows that gay men and lesbians were likely present in every class compensated through this litigation. As many as 15,000 gay men performed slave labor, and while the exact number will probably never be determined, it is highly likely that gays and lesbians, in a climate of terror and persecution in Nazi Germany, deposited assets in Swiss accounts and were never able



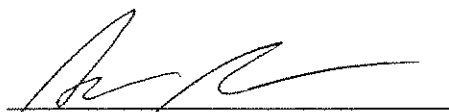
to recover them. It is also probable that the looted assets of dissolved gay and lesbian organizations and businesses and of gay victims imprisoned or sent to concentration camps were transferred by the Nazis in whole or part to Swiss banks, as were some or all of the proceeds of slave labor performed by gay men. To the extent those individuals who are members of the class may yet be identified and come forward with proof, they may receive a direct distribution from this settlement. In addition to these individuals, however, thousands of gay and lesbian people who are members of the class will never come forward to identify themselves, or have long since perished without the possibility of any recompense. In memory of these unknown or perished victims, and to make reparation to the gay and lesbian community in small part for what it lost in vitality and in cultural assets due to Nazi persecution, the Pink Triangle Coalition makes this proposal for a modest disbursement of one percent of the settlement funds.

**V. Conclusion**

The Pink Triangle Coalition respectfully objects to the Special Master's Recommendation to the extent it inadequately accounts for the tragic historical record of Nazi persecution and post-war repression of homosexual class members, and requests that a distribution of one percent of the settlement fund with interest be granted to benefit these members of the class through material assistance for survivors, research and education projects, and human rights work, consistent with the Proposal of the Pink Triangle Coalition.

DATED: December 19, 2003

Respectfully Submitted,



Susan Sommer, Esq.  
LAMBDA LEGAL DEFENSE AND  
EDUCATION FUND  
120 Wall Street, Suite 1500  
New York, New York 10005  
Telephone: (212) 809-8585  
Facsimile: (212) 809-0055

Counsel for Pink Triangle Coalition